



The Leader in Integrated  
Fire Doors and Smoke  
Curtain Technology

Integrated Doors

Fire Protective Smoke Curtains

Door Systems  
1150 S Las Brisas  
Placentia, CA 92870  
(866) 534-DOOR (3667)



*Door Systems Newsletter*

April 2024

## SMOKE & FIRE CURTAINS

by Door Systems



### Introducing DSI-FW119 Deployable Fabric Fire Wall

A vertical-acting fabric firewall that was tested for 3 hours.

The **DSI Deployable Fabric Fire Wall Model DSI-FW119** allows architects to exceed the maximum 25% fire barrier opening penetration restriction. (**IBC Section 707.6**) Typical overhead or side-acting opening protectives with a fire-resistance rating fall into this limitation.

However, with an ASTM E119/ UL263 rating, the DSI Deployable Fabric Fire Wall is considered a wall and, therefore, meets the exception (Exception 3) and is not

limited to this rule.

#### IBC Section 707.6

**Exception 3:** Openings shall not be limited to 156 square feet (15 m<sup>2</sup>) or an aggregate width of 25 percent of the length of the wall where the opening protective has been tested in accordance with ASTM E119 or UL 263 and has a minimum fire-resistance rating not less than the fire-resistance rating of the wall.

DSI FW119 Deployable Fabric Fire Wall and Horizontal Fire Curtain

Offers Protection  
for Temperatures up to 1,800° F

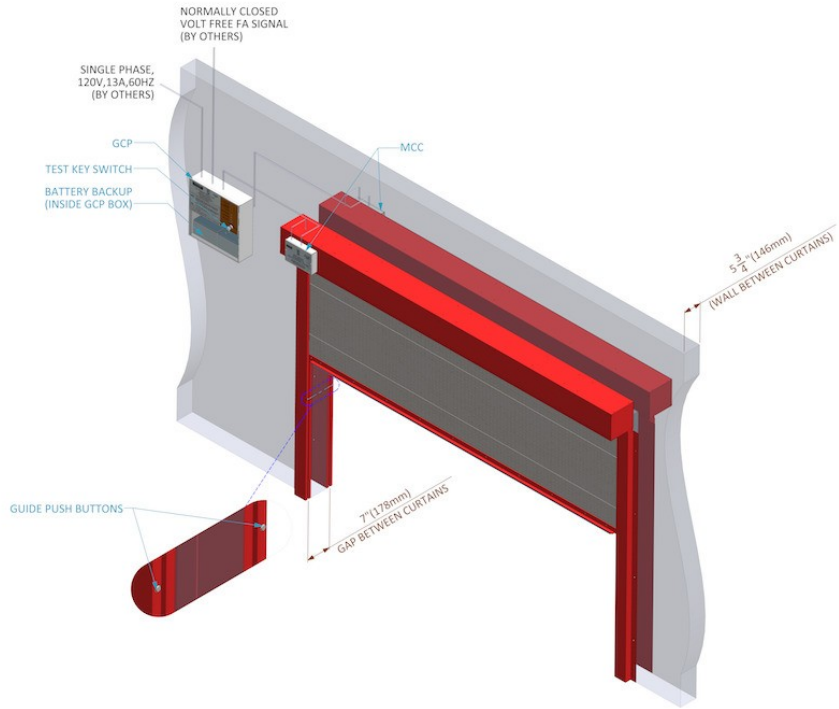
Watch on YouTube

Tested and listed to:

- UL 10B, ASTM E2226: 180 minutes fire rating
- UL263, ASTM E119: For a 3-hour firewall
- UL 864: Controls for Fire Protective Signaling Systems
- 250-degree Temperature Rise rating for up to 120 minutes

The DSI Deployable Fabric Fire Wall consists of two DSI Hose Stream Rated Smoke and Fire Curtains mounted back-to-back. This creates a small, lightweight package above the ceiling that remains virtually invisible until deployed.

The curtains consist of proprietary lightweight multi-layered fire-rated fiberglass/stainless steel fabric and slim steel side guides that can be hidden in the walls.



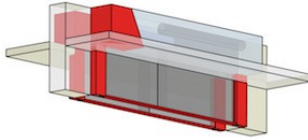
DSI-FW119 Deployable Fabric Fire Wall



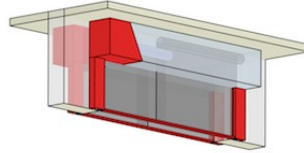


## Fire Barrier

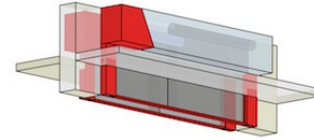
### HEADBOX FINISHING OPTIONS



Flush to Ceiling(HBFC\_01)

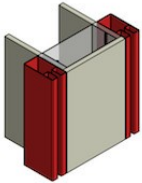


Exposed Mount(HBEM\_01)

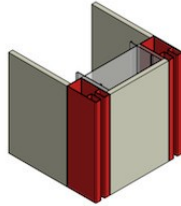


Shadow Gap(HBSG\_01)

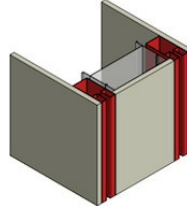
### SIDE GUIDE MOUNTING OPTIONS



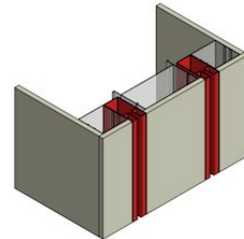
Exposed Flush(SGMEF\_01)



Butt to Wall Flush(SGMBWF\_02)



Insert in Drywall(SGMIDF\_03)

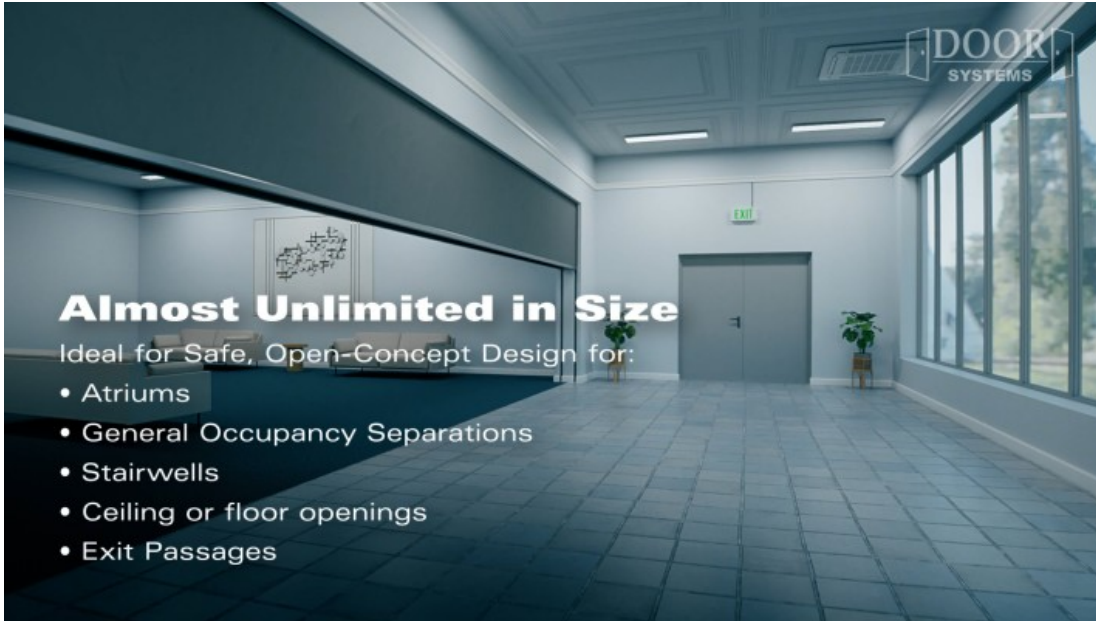


Insert in Wall Flush(SGMIWF\_3A)

## Protected path of egress

The DSI-FW119 can serve as an exit component in an egress corridor as described in (IBC Section 1024.1)





#### IBC Section 1024.1

Exit passageways serving as an exit component in a means of egress system shall comply with the requirements of this section. An exit passageway shall not be used for any purpose other than as a means of egress and a circulation path.

#### Fire barriers for atrium enclosures

As described in (IBC Section 404.6), atriums require a 1-hour fire barrier. The DSI-FW119 DEPLOYABLE FABRIC FIREWALL is rated for up to 3 hours and does not have the size limitations of traditional fire barrier openings.



#### **IBC Section 404.6 Enclosure of atriums**

Atrium spaces shall be separated from adjacent spaces by a 1-hour fire barrier constructed in accordance with Section 707 or a horizontal assembly constructed in accordance with Section 711, or both.

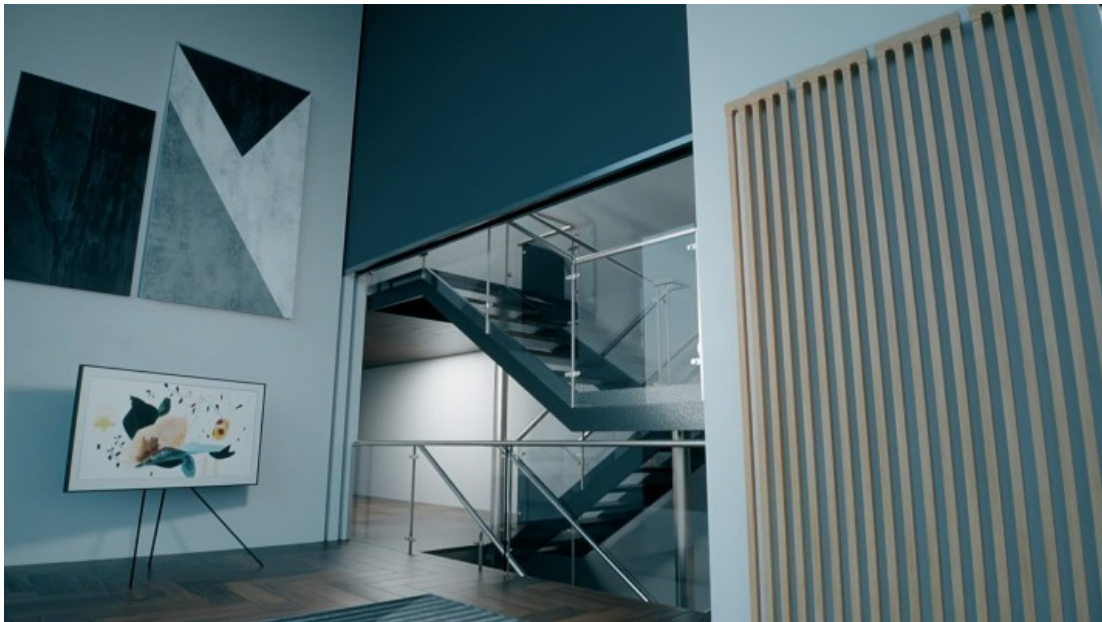
Let your open plan designs flourish by incorporating the ASME E119 Tested Fire Wall by Door Systems, Inc.

#### **FEATURES FOR DSI-FW119 DEPLOYABLE FABRIC FIREWALL**

- Creates open space for your building design.
- Allows designers to go beyond the 25% fire barrier penetration restriction.
- Saves money by reducing or eliminating smoke evacuation systems.
- Compact design
- Code compliant – Tested to ASTM E119/ UL 263
- Fire-rated up to 3 hours.
- 250-degree Temperature rise rating after 2 hours
- Battery backup system standard
- Fail-safe deployment with automatic reset



Galleries and Meeting Spaces

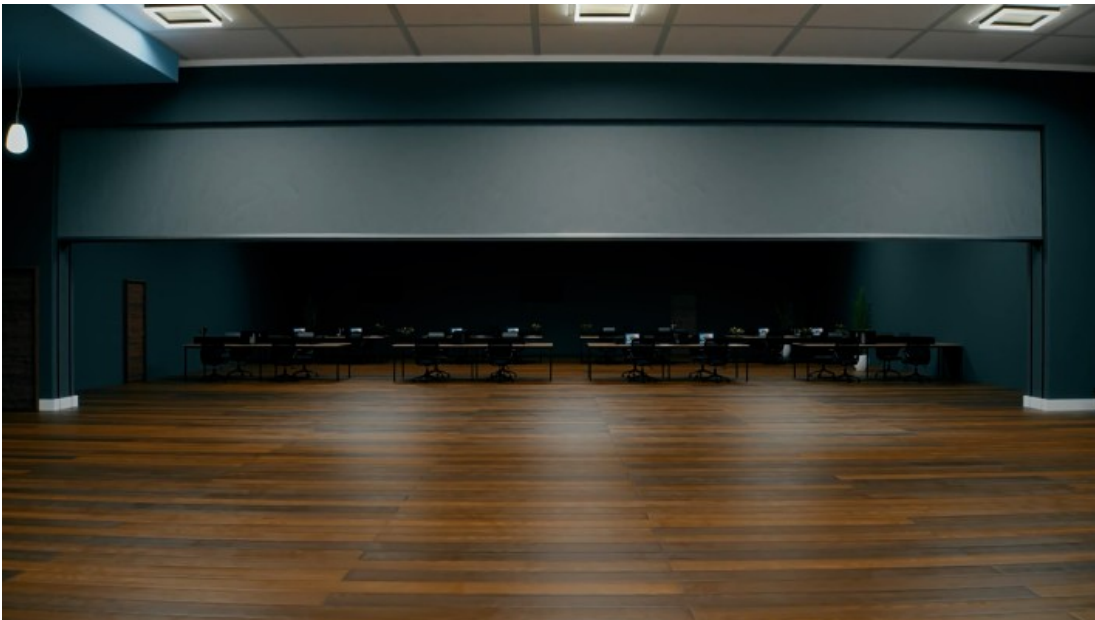


Stair Cases





Floor Openings



DSI-FW119 Deployable Fire Wall

The DSI Deployable Fire Wall incorporates the cutting-edge technology of our **Hose Stream Rated Smoke and Fire Curtain** but has the advantage of being tested as a 3-hour fire-rated wall assembly.

This, in turn, allows architects more cost-effective options for open space design while still meeting code requirements.

Discover more possibilities @ [www.doorsysinc.com](http://www.doorsysinc.com)

## UL10B HOSE STREAM RATED CURTAIN PRODUCTS

Hose Stream Rated Smoke and Fire Curtains incorporate the cutting-edge technology of our UL 10D curtain products but with the advantage of being code compliant in any fire wall rated up to 3 hours.



### DSI-HS10B Hose Stream Rated Smoke and Fire Curtain

With a UL10B 3-hour fire rating, the DSI-HS10B Fire Curtain can be used in fire walls and fire barrier walls as a replacement solution to traditional Coiling Steel Fire doors.

[Learn more →](#)



### DSI-HHS10B Hose Stream Rated Horizontal Fire Curtain

The DSI-HHS10B Hose Stream Rated Horizontal Fire Curtain allows architects to compartmentalize large floor openings reducing mechanical smoke evacuation systems.

[Learn more →](#)



### DSI-FW119 Deployable Fabric Fire Wall

The DSI Deployable Fire Wall incorporates the cutting-edge technology of our Hose Stream Rated Smoke and Fire Curtain but with the advantage of being tested as a 3-hour fire rated wall assembly.

[Learn more →](#)

Contact **Door Systems** today to discover innovative solutions to your existing smoke and fire protection needs and **assist in the concept, design,** and layout of all future smoke and fire containment projects.



## AIA Courses for Your Team!

AIA Courses are now available for the DSI-FW119 Deployable Fabric Fire Wall.

[Schedule Yours Today!](#)

You can also find us on the following:



[Click here](#) to access Door Systems's design files including BIM/Revits models, CAD drawings, specifications, videos and related documents.



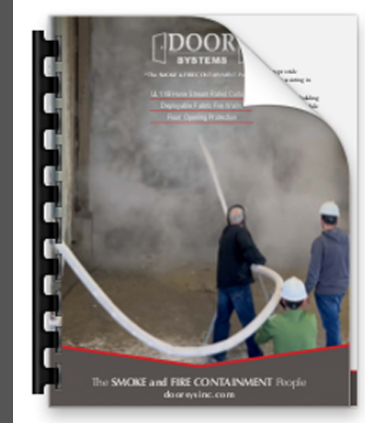
Specify our Products in  
**speclink<sup>®</sup>e**

Find us in  
**MASTERSPEC<sup>®</sup>**  
[Click Here](#)

For more information feel free to visit our website at [www.doorsysinc.com](http://www.doorsysinc.com) or call us at 866-534-3667

We are also available for architectural presentations, lunch and learns or come visit our showrooms.

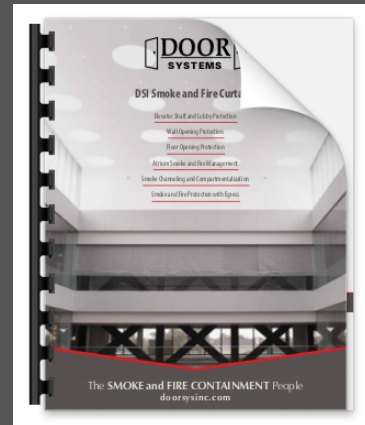
[Download Our New Brochure!](#)



For more information feel free to visit our website at [www.doorsysinc.com](http://www.doorsysinc.com) or call us at 866-534-3667

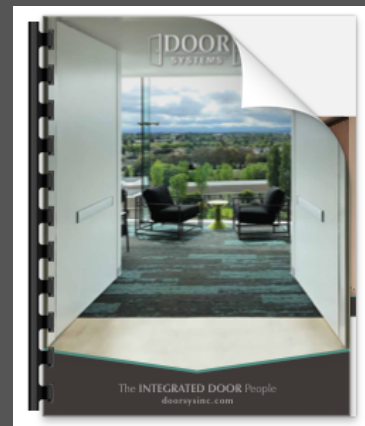
We are also available for architectural presentations, lunch and learns or come visit our showrooms.

[Download Our New Brochure!](#)



Our mailing address is:  
 Door Systems  
 1150 S Las Brisas  
 Placentia, CA 92870

[Download Our New Brochure!](#)



**Northern California Office**

**So California Office and other Territories**

Salvador Perez  
Director of Design & Development  
587 Division Street  
Campbell, Ca 95008  
(408) 477-4300  
Cell: (714) 586-7281

Email [salvador@doorsysinc.com](mailto:salvador@doorsysinc.com)

Salvador Perez  
Director of Design & Development  
1150 S Las Brisas  
Placentia, CA 92870  
(866) 534-DOOR (3667)  
Cell: (714) 586-7281

Email [salvador@doorsysinc.com](mailto:salvador@doorsysinc.com)

Sent by



© 2024 Door Systems