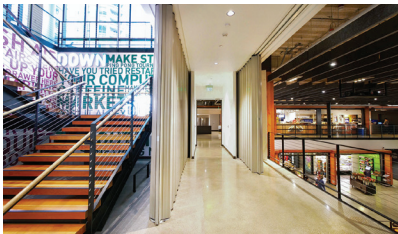




Won-Door Moveable FireWall™

MFW I | MFW II

Fire-Rated Accordion Folding Walls



SECURE SOLUTION

Won-Door FireGuard Moveable FireWall™ (MFW) is the only rated accordion folding system capable of spanning large openings that require ASTM E119.

DESCRIPTION

- Serve as a moving extension of a fire barrier
- May exceed max allowable opening size per IBC 707.6, Exception 3
- Egress available with AHJ approval (ADA compliant)
- 1 and 2 hour fire ratings available
- Door weight = 6.5lb/ft² of clear opening
- Deflection = 1/4" max. (live load + door weight)

REGULATORY REFERENCES

- UL**
- UL 263/ASTM E119 – Fire tested for wall assemblies
 - UL Design #U520 – Requirements for fire-resistance rating for wall assemblies

SIZES

- Heights up to 15' for straight applications, 12' for curves
- Lengths up to 40' for straight applications, 30' for curves
- Larger walls available with special authorization

ABBREVIATIONS

- **MFW I**
Won-Door Moveable FireWall™, 1 hour rated
- **MFW II**
Won-Door Moveable FireWall™, 2 hour rated

OPTIONS

- ☐ **Key Switch** limits controls to authorized personnel.
- ☐ **Backlit Exit Hardware & Reflective Signage** increases visibility of egress path (with AHJ approval).
- ☐ **Infrared Leading Edge Detector** sets off an audible alarm if something is left in the path of the door.
- ☐ **LCD Display** provides written description of audible door status communications.



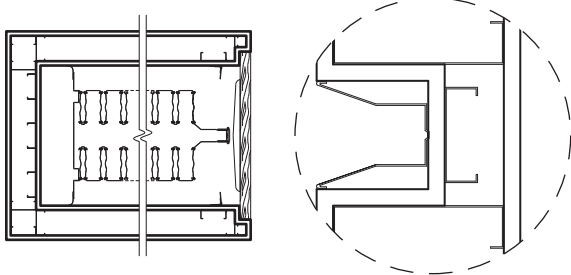
"The Smoke & Fire Containment People"
www.doorsysinc.com

Distributed by: Door Systems, Inc.



Won-Door Moveable FireWall™

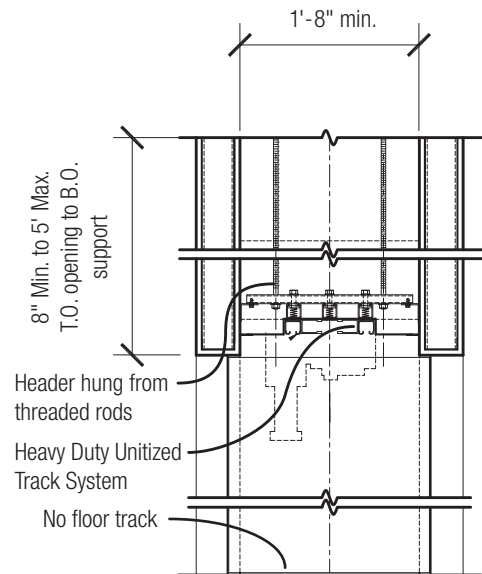
Fire-Rated Accordion Folding Walls



NARROW LEAD POST

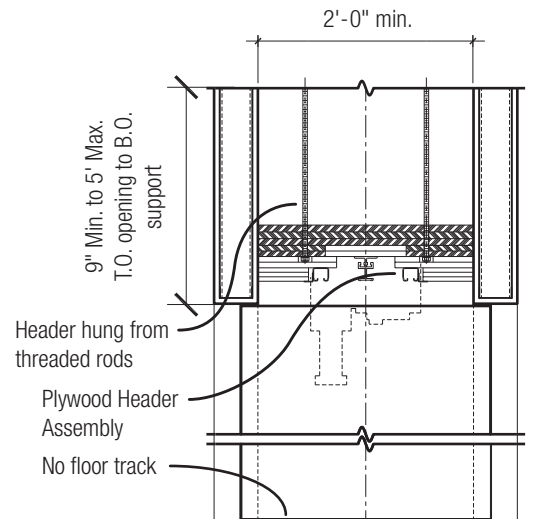
with custom non-rated cover door (by others)

Only available with the narrow lead post. Cover door non-rated & designed by architect and provided by others.



STRAIGHT TRACK HEAD DETAIL

Track detail varies with rating. See website.



CURVED TRACK HEAD DETAIL

Track detail varies with rating. See website.