



# Won-Door DuraSound™

## Acoustically Rated Folding Partitions



"The Smoke & Fire Containment People"

[www.doorsysinc.com](http://www.doorsysinc.com)

Distributed by: Door Systems, Inc.

## QUIETLY MAXIMIZING YOUR SPACE

With the invention of the accordion folding, two-track system, Won-Door changed the game in sound-rated partitions. Won-Door's accordion folding system is the gold standard, allowing for maximum flexibility and utilization of space. With two independent rows of steel panels and dead-air space in between, Won-Door DuraSound™ provides unmatched sound attenuation to STC 48. Experience the WONDER of Won-Door!

### DURABILITY:

- 24 gauge steel panels are corrugated for strength.
- Finishes are permanently bonded to steel panels to resist peeling, marring and scratching.
- Two-track system with no internal parts can withstand the most severe blows.
- Outlasts alternatives designed with internal parts.

### BENEFITS:

- Superb 48 STC rating.
- Easy operation at only 4.2 lbs./sq. ft.
- No floor track to clean or maintain.
- Enhances visual appeal and building space utilization.

### APPLICATIONS:

- Healthcare
- Hospitality
- Education
- Government
- Worship
- Performing Arts
- Office
- Restaurants
- Transportation
- Industrial

# Won-Door DuraSound™ Acoustically Rated Folding Partitions



Won-Door DuraSound™ has been designed to efficiently divide larger environments into multiple smaller spaces.

## Specifiable Options

- Straight or curved design
- Virtually unlimited heights and widths
- Manual or power-operated
- Single or bi-parting
- Seven durable finishes
- Track Type
  - T-11 Track for use with suspended acoustic tile ceilings
  - T-09 Track for soffit or wood trim
- Cylinder key locks
- Jamb Type
  - Fixed jamb exposed at and affixed to jamb wall surface
  - Floating jamb is pocketed



Modular construction means simple, in-place repairability.



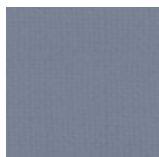
The air space between the two walls creates an effective cushion against severe blows and abuse.



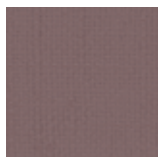
Weighing only 4.2 lbs. per square foot, the dual-wall Won-Door DuraSound is lighter than other partitions.

## Color Selection Guide

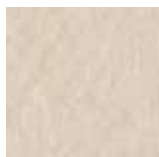
Choose from seven durable finishes.



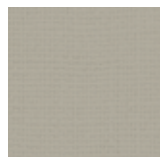
Colonial Blue  
(PN-164)



Rose  
(PN-153)



White  
(ML-885)



Sandalwood  
(PN-163)



Dove  
(ML-864)



Teak  
(ML-745)



Nile  
(PN-162)