



Tested to UL 1784, UL 10D, UL 10B, and ASTM E119 / UL 263

---

Elevator Shaft and Lobby Protection

---

Wall Opening Protection

---

Vertical Space Separation

---

Atrium Smoke and Fire Management

---

Smoke Channeling and Compartmentalization

---

Smoke and Fire Protection with Egress

---

# DSI SMOKE AND FIRE CURTAINS

[doorsysinc.com](https://doorsysinc.com) | (866) 534-DOOR (3667)

# Table of Contents

Applications . . . . . 2

Elevator Smoke Containment System® . . . . . 4

UL 10D Smoke & Fire Curtain . . . . . 6

UL 10D Accordion Fire Curtain . . . . . 8

UL 10D Horizontal Fire Curtain . . . . . 10

UL 10D Automatic Draft Smoke Curtain . . . . . 12

UL 10D Fixed / Static Draft Smoke Curtain . . . . . 13

UL 10D Manual Fire Protective Smoke Curtain . . . . . 14

Smoke, Fire, and Temperature Standards . . . . . 16

DSI-HS10B Fabric Fire Curtain vs. Overhead Steel Fire Doors . . . 17

UL 10B Hose Stream Rated Smoke & Fire Curtain . . . . . 18

UL 10B Hose Stream Rated Horizontal Smoke & Fire Curtain . . . 20

ASTM E119 / UL 263 Deployable Fabric Fire Wall . . . . . 22

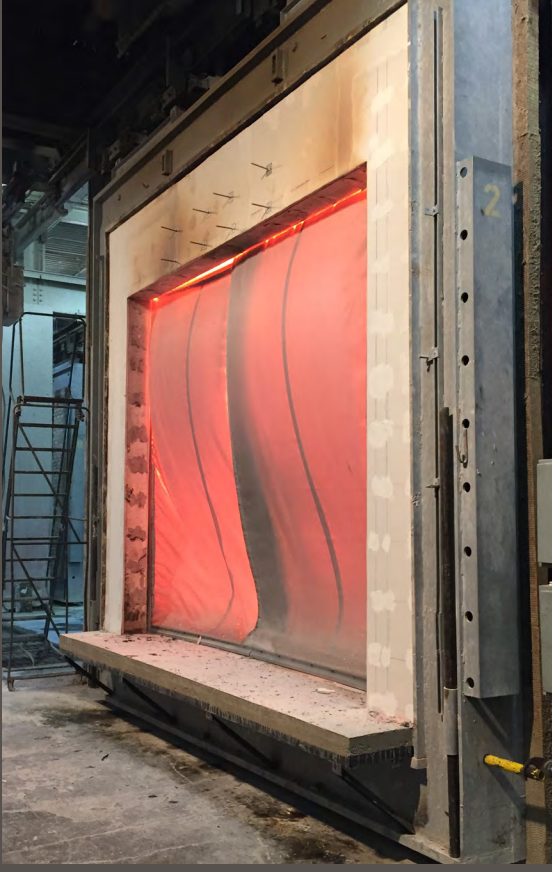
UL 10B Manual Hose Stream Smoke & Fire Curtain . . . . . 24

Egress Options . . . . . 26

Electronic Control Options . . . . . 28

Curtain Fabric Options . . . . . 29

Testimonials . . . . . Back Cover



The **SMOKE** and **FIRE CONTAINMENT** People

# LETTER FROM THE PRESIDENT

Door Systems®, is a full-service smoke and fire curtain company dedicated to providing innovative solutions for your existing smoke and fire protection needs, as well as assisting with the concept, design, and layout of all future projects.

Whether you are an architect seeking consultation on a new construction project or a building owner/engineer looking to bring your existing smoke and fire control system up to code while reducing maintenance costs and energy expenses, the Door Systems staff is here to assist.

Door Systems has developed a revolutionary new product line of UL 10B fire curtain products that have passed the ASTM E2226 Hose Stream structural integrity test.

Based on an innovative fire curtain with multiple layers, these new products incorporate the cutting-edge technology of our UL 10D curtain line, with the added advantage of code compliance as opening protectives in any fire wall rated for up to 2 or 3 hours (depending on the specific curtain product used).

These fire curtain products offer distinct advantages over traditional steel shutter systems. Benefits include:

- Cost-effectiveness
- Up to 75% reduction in overall weight
- Reduced side room and headroom requirements
- Capability to cover much larger openings than traditional steel doors
- Egress options available
- Standard battery backup and gravity-fail-safe features
- Ability to remain virtually hidden within architectural design schemes
- Code compliance without the need for smoke seals

Our curtain systems are designed to be discreet, robust, and easy to operate and maintain, providing solutions to even the most demanding architectural challenges.

This globally recognized technology is rapidly gaining acceptance in the USA.

Our manufacturing processes and quality control procedures are certified to meet the full requirements of ISO 9001:2015. Every smoke and fire curtain from Door Systems is certified and listed by an approved UL listed agency.

All our DSI Smoke and Fire Protective Curtains undergo rigorous testing and comply with all relevant UL standards, enabling their integration into designs across the United States.

Please take a moment to browse through our applications to discover how our products can enhance your building design and help solve your smoke and fire containment challenges.

Sincerely,



Jeff Bonnema, President, Door Systems



**Scan to view  
Door Systems'  
Full Line of Products**



# FIRE AND SMOKE PROTECTION TO **SUIT ALL YOUR APPLICATIONS**



## **Elevator Shaft and Lobby Smoke Containment**

Elevator shafts are easy conduits for spreading smoke and fire which can engulf an entire building in minutes. While virtually invisible when retracted above the ceiling, DSI elevator smoke curtains create a smoke and fire barrier, eliminating the need for elevator lobbies.

## **Wall Openings and Fire Compartmentalization**

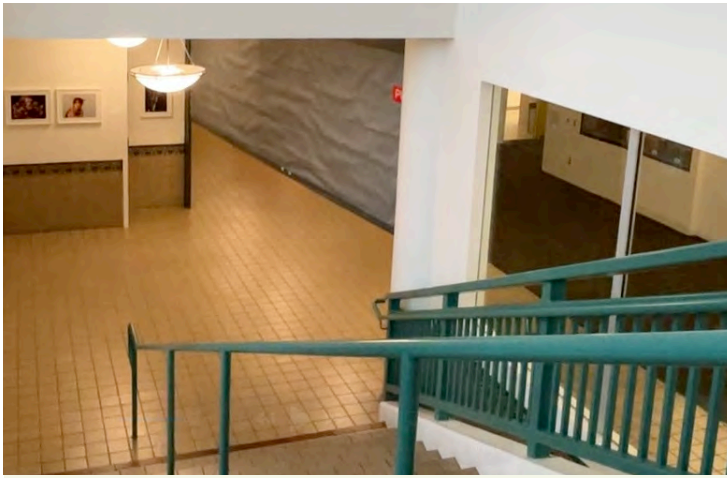
To prevent the spread of smoke and fire from one zone to another, DSI Smoke and Fire Curtains are a vital element of a smoke and fire compartmentalization strategy, with a UL 10B rating of up to 180 minutes. Additionally, the Deployable Fabric Firewall is available and tested to ASTM E119 / UL 263 for 120 minutes.



## **Atrium Smoke and Fire Strategy**

Atriums create large, open spaces that can quickly become engulfed in smoke as the fire travels from floor to floor. The spread of smoke and fire can be limited by DSI Smoke and Fire Curtains as they channel smoke toward extraction systems.





## Area of Safe Refuge

Stairwell openings are critical evacuation routes that must remain tenable during a fire. DSI fire and smoke curtains deploy at landing openings to create a protected vestibule, ensuring fire protection and a code-compliant area of safe refuge, and preserving clear egress paths without compromising architectural aesthetics.

## Ceiling Penetrations

Vertical space separation with ease using Horizontal Smoke and Fire Curtains that showcase your open concept design.



## Fire-rated Glass Alternative

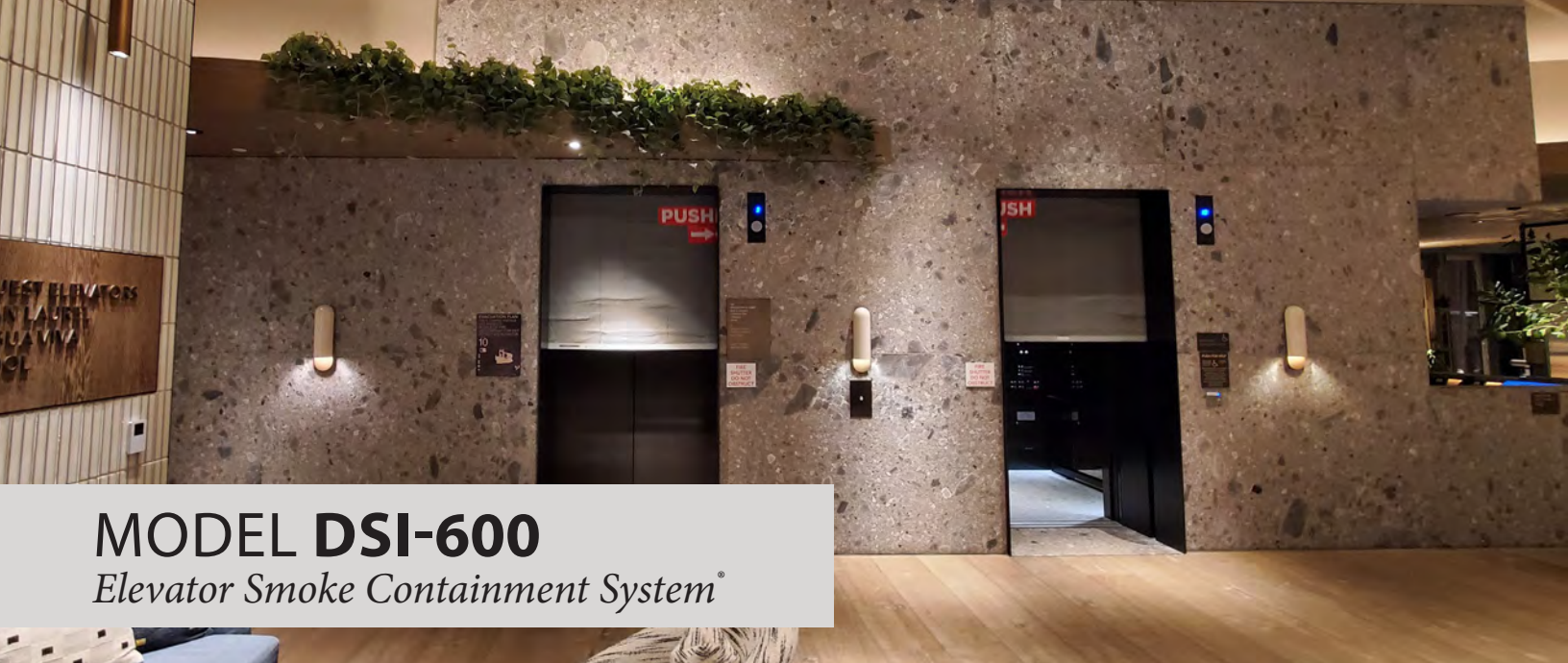
Fire-rated glass is not only costly, but it also has size limitations. This means unsightly mullions will have to be incorporated in most applications. The use of DSI Fire Curtains in front of non-rated glass serves as a cost-effective and architecturally pleasing solution.

## Parking Garage Separation

Fire curtains can be installed at level transitions or between bays to isolate smoke and fire while preserving clear access and ventilation for evacuation and firefighting. The systems deploy instantly upon fire detection to create a code-compliant fire separation, offering a low-profile UL 10B alternative to bulky overhead coiling steel doors.







# MODEL DSI-600

Elevator Smoke Containment System®

A cost-effective and architecturally pleasing solution for your elevator shaft and lobby fire protection.

The DSI-600 elevator smoke curtain creates a code-compliant smoke and draft control assembly when paired with fire-rated elevator doors. The gravity fail-safe deployable smoke and fire protective curtain system is composed of a glass fiber fabric rolled onto a round steel tube in a fire-rated assembly. The curtain remains retracted above the finished ceiling by a low-voltage system until activated by the fire alarm system. At this point, it descends at 6 inches per second, creating a smoke and fire barrier with the elevator opening.

## ADVANTAGES:

- Custom sizes are available to fit any elevator size
- Compact design: 7 1/2" x 7 1/2" headbox
- Creates open space for your building design
- Various finishing options are available
- Battery back-up system standard
- Multiple egress options per ICC AC77

### Compliant with...

Code	Description
UL 10D	Fire Protective Smoke Curtains – 60 or 180 Minutes
UL 1784	Air Leakage Test of Door Assemblies
UL 864	Listed Release Device
ASTM E84	Class A Surface Building Characteristics
AC77	ICC Evaluation Test Report ESR #4761
	California State Fire Marshal Listed
	OSHPD / HACAI Approved
	LAFD Approval for High Rise Applications



Scan for  
more info



### Vision Lite Panel

(optional)

- Compliant with ASME A17.1, Elevator Safety Code
- IBC - Section 3006.3
- NFPA 105

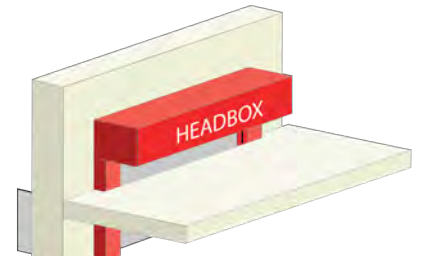
## HEADBOX FINISHING OPTIONS



**Flush to Ceiling (OPTION#1)**

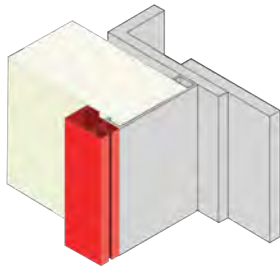


**Exposed Mount (OPTION#2)**

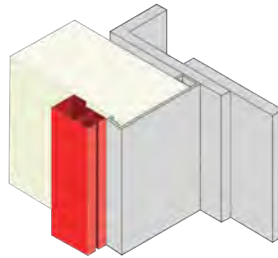


**Shadow Gap (OPTION#3)**

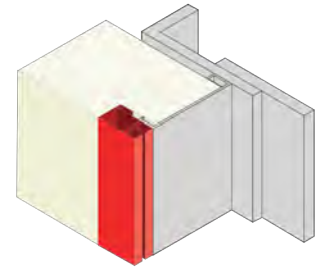
## SIDE GUIDE MOUNTING and FINISHING OPTIONS



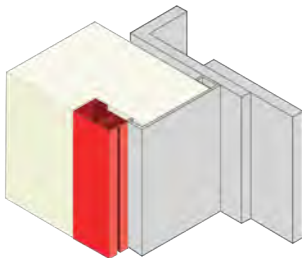
**Exposed Flush (OPTION#1)**



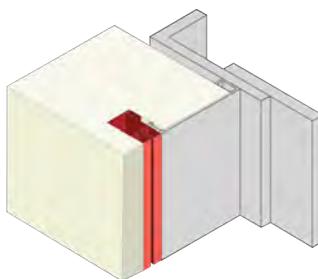
**Exposed Setback (OPTION#2)**



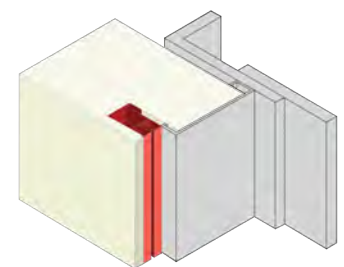
**Butt to Wall Flush (OPTION#3)**



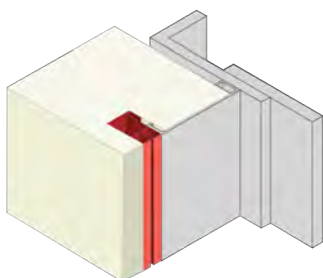
**Butt to Wall Setback (OPTION#3a)**



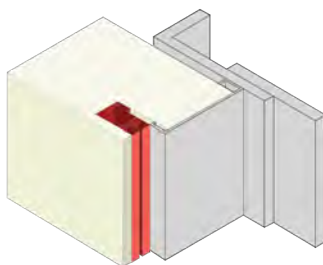
**Inset in Drywall Flush (OPTION#4)**



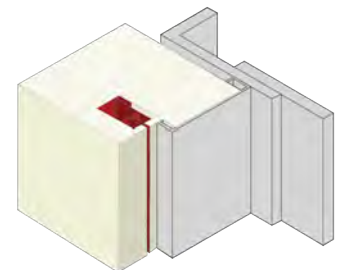
**Inset in Drywall Setback (OPTION#4a)**



**Inset in Wall Flush (OPTION#4b)**



**Inset in Wall Setback (OPTION#4c)**



**Shadow Gap (OPTION#5)**



# MODEL DSI-C1HR & DSI-C3HR

UL 10D Smoke and Fire Curtains

The DSI Smoke and Fire Curtains are available in a single-barrel configuration for widths under 16 feet and a multi-barrel configuration for widths over 16 feet, providing a one-hour opening protective smoke and fire barrier.

The assembly comprises a fire-rated fiberglass fabric wrapped around a roller, which encases a compact headbox typically installed above the ceiling, along with side guides embedded in the wall. This makes the system virtually invisible until activated.

The DSI-C1HR and DSI-C3HR Smoke and Fire Curtains are completely gravity fail-safe, automatically reset, and incorporate the latest in electronic technology. As a result, these curtains are among the most advanced yet cost-effective systems on the market.

## ADVANTAGES:

- Cost-effective
- Creates open space for your building design
- Compact design , low headroom requirements
- Virtually invisible design
- Lightweight, requires little to no structural support
- Unlimited width, custom sizes
- Code compliant
- Multiple egress options
- Battery backup system standard
- Fail safe system with automatic reset

### Compliant with...

Code	Description
UL 10D	C1HR: Fire Protective Smoke Curtains – 60 minutes
UL 10D	C3HR: Fire Protective Smoke Curtains – 180 minutes
UL 1784	Air Leakage Test of Door Assemblies
UL 864	Control Units for Fire Protective Signaling Systems
NFPA 80	CH. 21 Fire Protective Curtain Assemblies
NFPA 105	CH. 8 Smoke Protective Curtain Assemblies
	California State Fire Marshal Listed

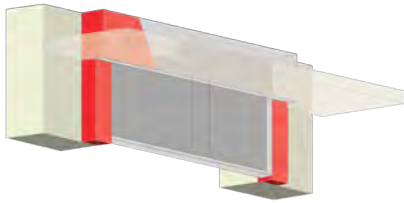


“The thing that surprised me most is that they are so concealing and you would never know they were there. This is important to landlords and architects looking to use a system that works yet blends in with the surroundings.”

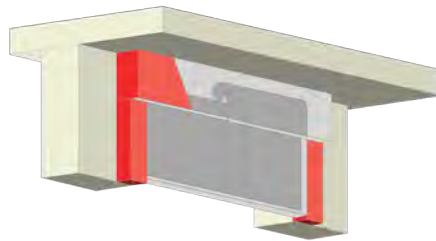
Philip Hernandez, Operations Manager  
The Swig Company



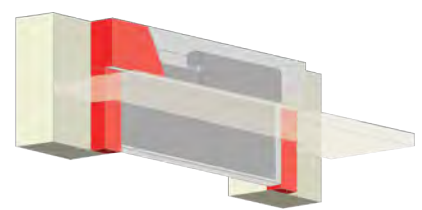
## HEADBOX FINISHING OPTIONS



**Flush to Ceiling (OPTION#1)**

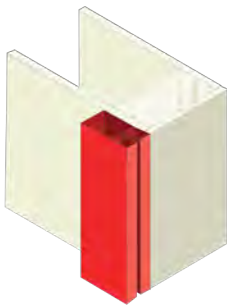


**Exposed Mount (OPTION#2)**

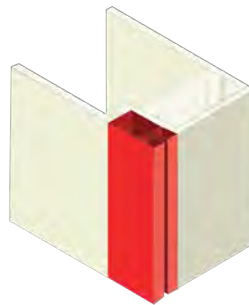


**Shadow Gap (OPTION#3)**

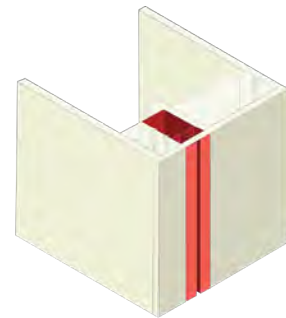
## SIDE GUIDE MOUNTING OPTIONS



**Exposed Flush**



**Butt to Wall Flush**



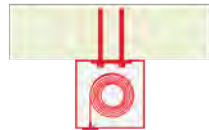
**Inset in Wall Flush**

## SINGLE ROLLER MOUNTING OPTIONS



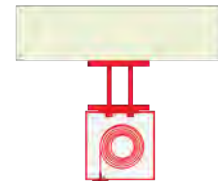
**Fixed Mount**

*Fixed directly to the lintel above an opening.*



**Soffit Fixed Mount**

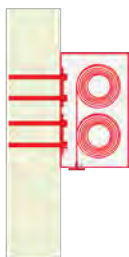
*Fixed directly to the underside of the soffit slab.*



**Suspended Soffit Mount**

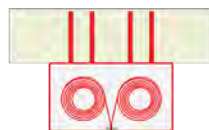
*Suspend from soffit via unistruts and all thread.*

## MULTIPLE ROLLER MOUNTING OPTIONS



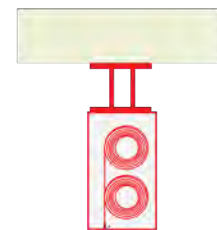
**Over/Under Arrangement**

*Fixed directly to the lintel above an opening.*



**Side by Side Arrangement**

*Fixed directly to the underside of the soffit slab.*



**Suspended Over/Under Arrangement**

*Suspend from soffit via unistruts and all thread.*



# MODEL DSI-A1HR & DSI-A4HR

UL 10D Accordion Fire Curtain

The DSI accordion smoke and fire curtains share the same qualities as UL 10D Fire Protective Smoke Curtains, but with the added benefit of taking on complicated geometry without the need for columns or corner posts. Used as smoke barriers and partitions, protecting atriums, corridors, stairwells, escalators, and other large openings by forming compartments throughout the building.

The curtain assembly comprises fire-rated fiberglass fabric uniquely folded into a compact headbox that is typically installed above the ceiling with a finished bottom tray. This makes the system virtually invisible until activated.

The DSI-A1HR and DSI-A4HR accordion fire curtains are completely gravity fail-safe, automatically reset, and incorporate the latest in electronic technology. Resulting in one of the most advanced, yet cost-effective systems on the market.

## ADVANTAGES:

- Cost-effective
- Creates open space for your building design
- Compact design, low headroom requirements
- Virtually invisible design
- Lightweight, requires little to no structural support
- Unlimited width, custom sizes
- Code compliant
- Option for egress
- Battery backup system standard
- Fail-safe system with automatic reset

### Compliant with...

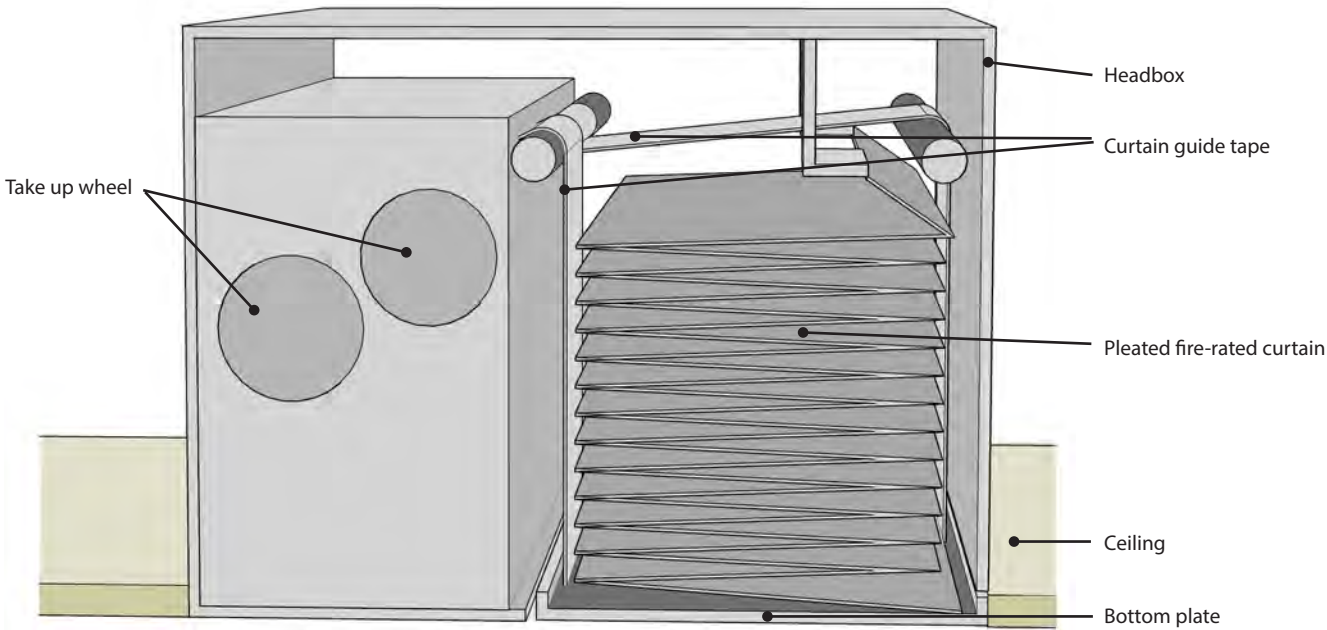
Code	Description
UL 10D	DSI-A1HR: Fire Protective Smoke Curtains – 60 mins
UL 10D	DSI-A4HR: Fire Protective Smoke Curtains – 180 mins
UL 1784	Air Leakage Test of Door Assemblies
UL 864	Control Units for Fire Protective Signaling Systems
NFPA 80	CH. 21 Fire Protective Curtain Assemblies
NFPA 105	CH. 8 Smoke Protective Curtain Assemblies
	California State Fire Marshal Listed

“Door Systems installed all the automatic fabric fire curtains on both sides of the 3 story atrium as well as in front of all the elevators. Some of the DSI fire curtains are over 45 feet wide which is larger than any fire door I have ever worked with in my 35 years of construction experience.”

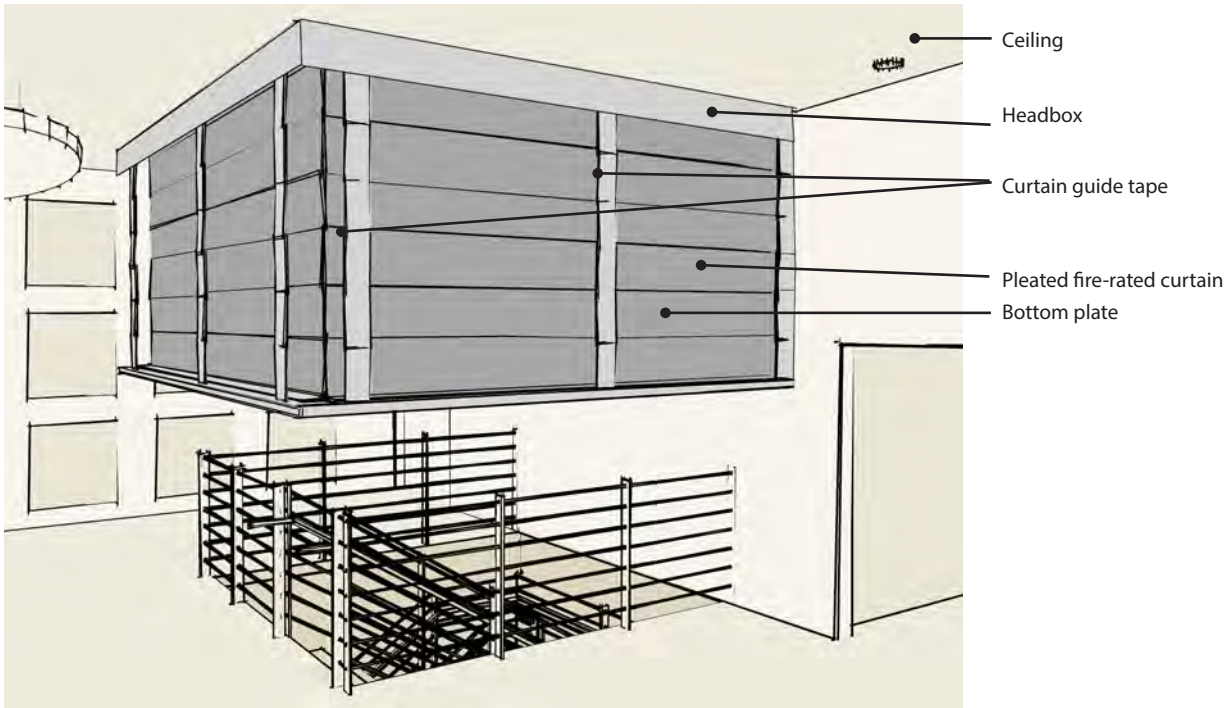
David Therault, Site Superintendent  
W. L. Butler Construction



## HEADBOX MECHANICS



## 3 SIDED CURTAIN FOR STAIRWELL PROTECTION APPLICATION







## MODEL DSI-H1HR & DSI-H3HR

### UL 10D Horizontal Fire Curtain

The UL 10D DSI horizontal fire curtain enables architects to compartmentalize atriums, reducing or eliminating the need for mechanical smoke evacuation systems. A solution to design challenges of preventing smoke and fire from spreading through the ceiling and atrium voids, stairwells, and skylights.

The DSI-H1HR and DSI-H3HR horizontal fire curtains comprise a light-gauge steel headbox that houses the roller, fabric, and motor within the casing, creating a compact package that remains virtually invisible. The curtain consists of woven fiberglass fabric. During deployment, the slim steel side guides prevent the fabric from derailing during operation, ensuring the system's integrity when faced with negative or positive pressures from a fire.

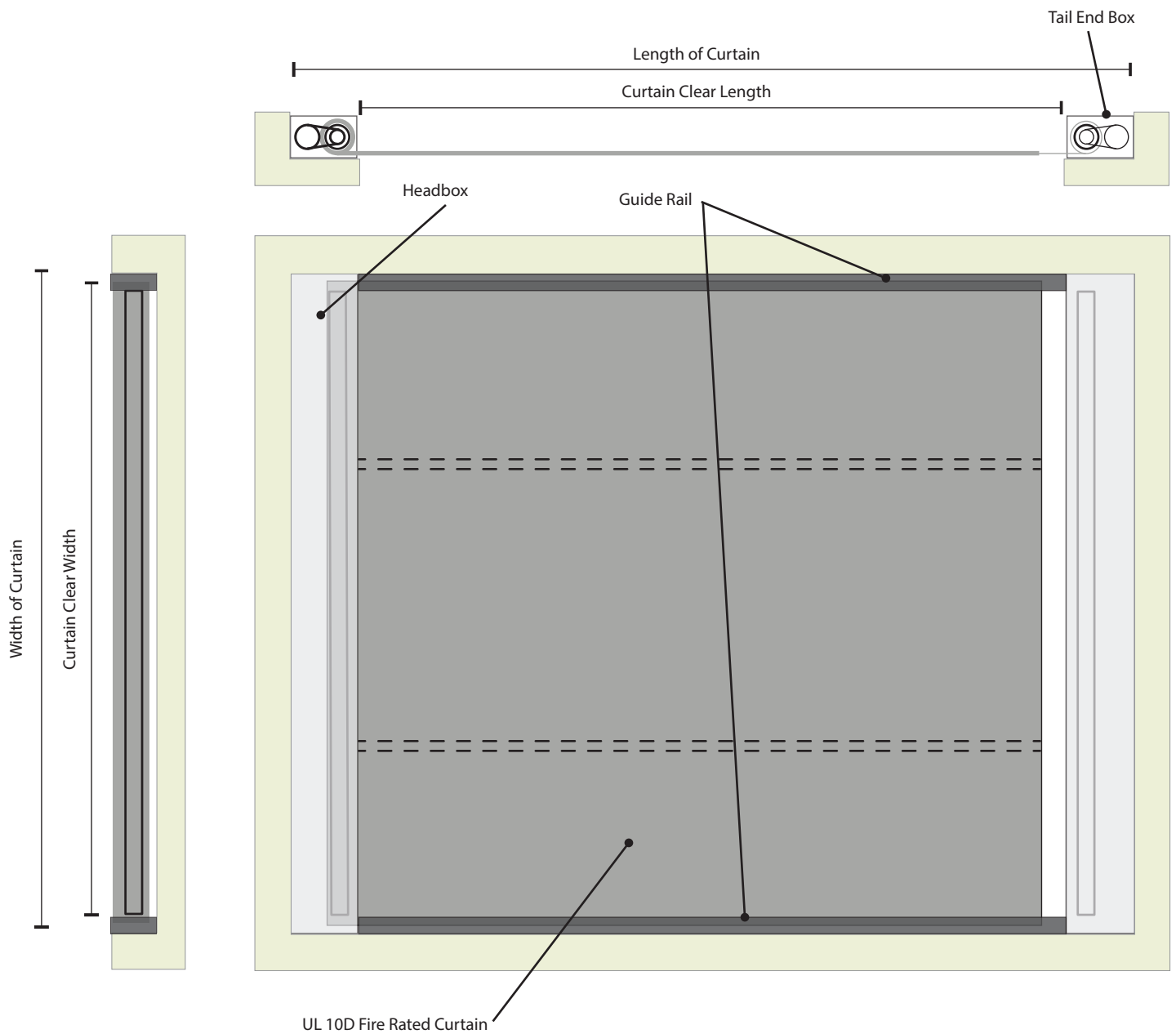
## ADVANTAGES:

- Cost effective
- Creates open space for your building design
- Can achieve sizes up to 26 feet wide by 32 feet long
- Saves money by reducing or eliminating smoke evacuation systems
- Code compliant
- Battery backup system (optional)
- Automatic reset
- Virtually invisible design
- Lightweight, requires little to no structural support
- Multiple mounting options

### Compliant with...

Code	Description
UL 10D	DSI-H1HR: Fire Protective Smoke Curtains – 60 mins
UL 10D	DSI-H3HR: Fire Protective Smoke Curtains – 180 mins
UL 864	Control Units for Fire Protective Signaling Systems
BS 5234-2	Fabric Impact Test
NFPA 80	CH. 21 Fire Protective Curtain Assemblies
NFPA 105	CH. 8 Smoke Protective Curtain Assemblies

## HEADBOX MECHANICS



# MODEL DSI-D1HR

## UL 10D Automatic Draft Smoke Curtain

DSI automatic draft smoke curtains assist in managing smoke in a building, channeling smoke movement to extraction points or creating reservoirs to slow the spread of smoke. The curtains remain virtually invisible in their retracted position within the compact head-box.

When signaled by a local detector or fire alarm system, the curtain descends to the operational level, utilizing gravity as a fail-safe mechanism.

The DSI Automatic Smoke Curtain, Model DSI-D1HRS, features a single-barrel configuration for widths under 16 feet, and Model DSI-D1HRM offers multi-barrel configurations for widths over 16 feet, creating a reliable protective smoke barrier.

The assembly comprises a fire-rated fiberglass fabric wrapped around a roller, which encases a compact head box that is typically installed above the ceiling. This makes the system virtually invisible until activated.

The DSI-D1HR automatic draft smoke curtain auto resets without intervention or special tools and incorporates the latest electronic technology. As a result, it is a cost-effective system and a practical solution when traditional glass draft stops are not feasible.



Scan for  
more info

## ADVANTAGES:

- Cost-effective
- Creates open space for your building design
- Compact design, low headroom requirements
- Virtually invisible design
- Lightweight, requires little to no structural support
- Unlimited width, custom sizes
- Code compliant
- Battery backup system standard
- Fail-safe system with automatic reset

### System tested in accordance with...

Description
BS EN 12101-1 Annex B (Reliability, Response time & Material Durability)
BS EN 12101-1 Annex C (Air Leakage)
BS EN 12101-1 Annex D (Fire Resistance Test)
UL 10D, UL 1784, UL 864
Fabric Tested to BS 476 Pt 6 & Pt 7, Class 0
System tested in Single & Multiple Barrel Orientation
Tested to ASTM E84 & UL 723 for VG455 Fabric



# FIXED / STATIC DRAFT CURTAINS

## *UL 10D Draft Smoke Curtain*

DSI static draft curtains are an effective product designed to protect against smoke in commercial and industrial structures. Secured to structural steel, Draft curtains ensure that the smoke and hot gases arising from fire remain buoyant within the smoke zone, consistent with smoke management strategies. Used in both sprinklered and non-sprinklered buildings for smoke management.

## ADVANTAGES:

- Lightweight and reduces load bearing
- Custom sizes and configurations
- Unlimited widths
- Low maintenance

### Compliant with...

Code	Description
UL 10D	Fire Protective Smoke Curtains – 60 minutes
UL 723	Surface burning characteristics of building materials
ASTM E84	Surface burning characteristics of building materials
IBC	Requirements for high hazard, fire-resistance-rated construction



**Scan for  
more info**



# MODEL DSI-M10D

UL 10D Manual Fire Protective Smoke Curtain

With a UL 10D rating up to 180-minutes, the DSI-M10D Manual Smoke Curtain is an opening protective for windows and other vulnerable openings that benefit from automatic-closing fire curtains deployed by a fusible link.

The assembly is comprised of a proprietary fire-rated fiberglass/stainless steel fabric wound around a roller.

The roller is encased in a compact head box typically installed above the ceiling with side guides that can be concealed in the wall, making the system virtually invisible until activated.

### Compliant with...

Code	Description
UL 10D	Fire Protective Smoke Curtains – 60 or 180 Minutes
UL 1784	Air Leakage Test of Door Assemblies
ASTM E84	Test Method for Surface Burning Characteristics

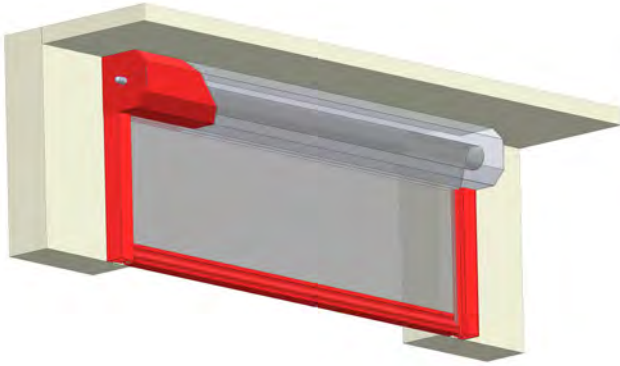
### ADVANTAGES vs STEEL FIRE SHUTTERS:

- No power needed, Fusible Link Activated
- Cost effective
- 75% lighter than overhead steel fire shutters
- Compact Headbox: as little as 7"
- Minimal side room required: 2" for any size
- Gravity Failsafe System & Easy Reset
- No exposed mechanisms, gears, chains, or motor parts
- Tested and Labeled to: UL 10D 60 or 180 minutes without hose stream test
- UL 1784 "S" label
- ASTM E84





## HEADBOX FINISHING OPTIONS



Exposed Mount

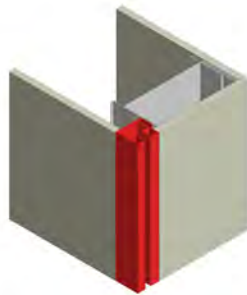


Shadow Gap

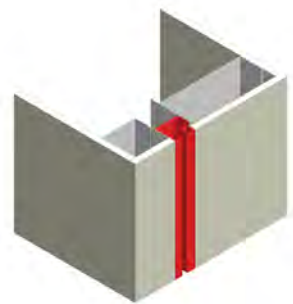
## SIDE GUIDE MOUNTING OPTIONS



Exposed Flush



Butt to Wall Flush

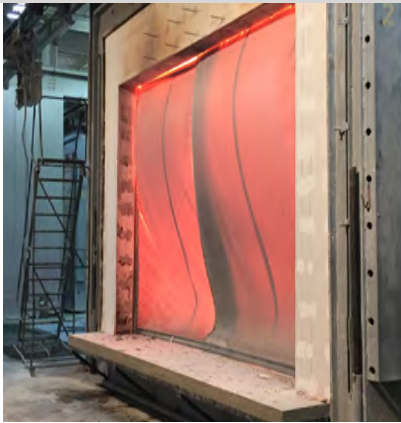


Inset in Wall Flush





# SMOKE, FIRE, AND TEMPERATURE STANDARDS



**Scan to view  
Building Code References & Videos**

DSI Model Numbers	Standard	Air Leakage Test (Smoke Rating)	Fire Endurance Test	Hose Stream Test (ASTM E2226)	250° Temperature Rise Rating
DSI-600, DSI-C1HR, DSI-C3HR, DSI-A4HR, DSI-H3HR, DSI-D1HR, DSI-S1HR, DSI-M10D, DSI-HS10B, DSI-HHS10B, DSI-HSM10B	UL 1784  Standard for Air Leakage Tests of Door Assemblies  <b>IBC Building Code</b> 710.5.2.2.1	✓			
DSI-600, DSI-C1HR, DSI-C3HR, DSI-A4HR, DSI-H3HR, DSI-D1HR, DSI-S1HR, DSI-M10D	UL 10D  Standard for Fire Tests of Fire- Protective Curtain  <b>IBC Building Code</b> 716.4	Tested Separately Under UL 1784	✓  1-3 Hour		
DSI-HS10B, DSI-HHS10B, DSI-HSM10B	UL 10B  Standard for Fire Tests of Door  <b>IBC Building Code</b> Table 716.1(2)	Tested Separately Under UL 1784	✓  1-3 Hour	✓	
DSI-FW119 Deployable Fabric Fire Wall	ASTM E119 / UL 263  Standard of Fire Endurance Testing (Heat Transfer in Walls)  <b>IBC Building Code</b> 707.6		✓  2 Hour	✓	✓  2 Hour



COMPACT  
FABRIC FIRE CURTAIN



BULKY  
ROLLING STEEL FIRE DOORS

## COMPARISON CHART

*DSI-HS10B Fabric Fire Curtain vs. Rolling Steel Fire Doors*

FEATURES & QUALIFICATIONS	DSI-HS10B HOSE STREAM RATED SMOKE AND FIRE CURTAIN	OVERHEAD COILING STEEL FIRE DOORS
Fire Label	UL 10B / ULC S104 with Hose Stream	UL 10B / ULC S104 with Hose Stream
Fire Rating	20, 90, or 180 minutes	20, 90, or 180 minutes
Smoke Label	UL 1784 (Standard)	UL 1784 (Optional)*
Smoke Seals	Not Required	Required for "S" Label
Fail Safe Operation	Standard	Optional for an added cost
Minimum Head Room Requirement	9"	16"
Maximum Head Room Requirement	12" *	30"
Side Clearance Required	4" on all sizes	Varies from 7 1/2" - 13 1/2"
Weight	3-5 lbs. per Sq. Ft.	13-15 lbs. per Sq. Ft.
Maximum Opening Size	984' Wide x 26'Tall*	24' Wide x 24'Tall*
Activation Function	Fire Alarm and/or Fusible Link	Fire Alarm and/or Fusible Link
Auto Reset Function	Standard	Optional for an added cost
Egress	Multiple options available	Not available
Battery Back-up	Standard on 24V	Optional for an added cost
Power Requirements	24V or 208V	120V Minimum
Finishes	Factory Primed finish	Factory Primed finish

\*Contact factory for options or other sizes



# MODEL DSI-HS10B

UL 10B Hose Stream Rated Smoke and Fire Curtain

The DSI-HS10B hose stream rated smoke and fire curtain incorporates the cutting-edge technology of our UL 10D curtain products, with the added advantage of being code compliant for any fire wall rated up to 3 hours.

With a UL10B 3-hour fire rating, the DSI-HS10B fire curtain can be used in fire walls and fire barrier walls as a replacement solution to traditional coiling steel fire doors/shutters.

The assembly consists of a proprietary, multi-layered fire-rated fiberglass/stainless steel fabric wound around a roller, which is encased in a compact head box. It is typically installed above the ceiling with side guides that are concealed in the wall. This makes the system virtually invisible until activated.

### Compliant with...

Code	Description
UL 10B	With Hose Stream Test – 90 or 180 Minutes
CAN/ULC S104	Standard Method for Fire Tests of Door Assemblies
UL 1784	Air Leakage Test of Door Assemblies
UL 864	Control Units for Fire Protective Signaling Systems
ASTM E2226	Hose Stream Test
	OSHPD / HACAi Approved

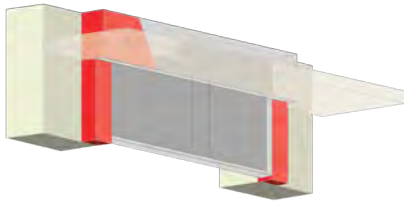
### ADVANTAGES vs STEEL FIRE SHUTTERS:

- Cost effective
- Lightweight – 75% lighter than overhead steel fire doors
- Compact headbox – as little as 9” required
- Minimal Side room required -- 4” for any size
- No size restrictions – Almost unlimited in size
- Various egress options available
- Battery backup (option)
- Gravity Failsafe System with Auto reset
- No exposed mechanisms, gears, chains, or motor parts
- Can be almost completely hidden in your architectural design scheme
- Code Compliant - Tested and Labeled to UL 10B 180 minutes with hose stream. UL 1784 “S” label

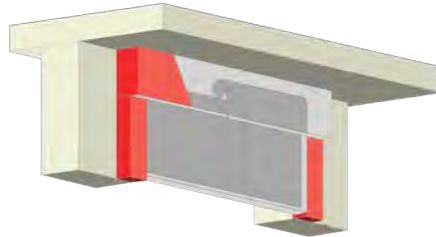




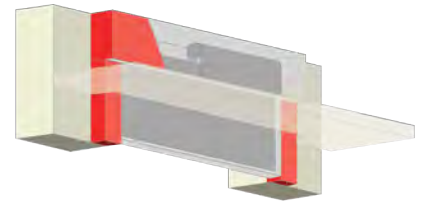
## HEADBOX FINISHING OPTIONS



**Flush to Ceiling (OPTION#1)**

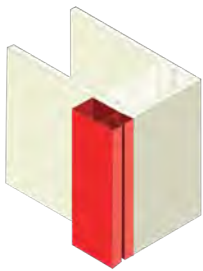


**Exposed Mount (OPTION#2)**

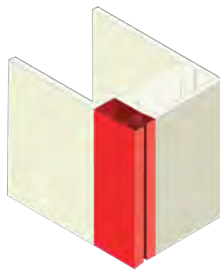


**Shadow Gap (OPTION#3)**

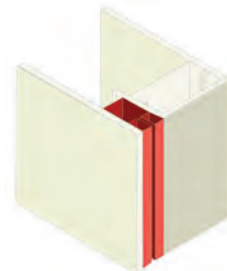
## SIDE GUIDE MOUNTING OPTIONS



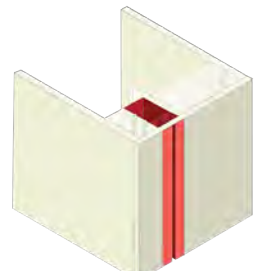
**Exposed Flush**



**Butt to Wall Flush**



**Inset in Drywall**



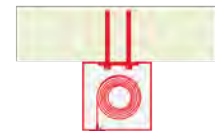
**Inset in Wall Flush**

## SINGLE ROLLER MOUNTING OPTIONS



**Fixed Mount**

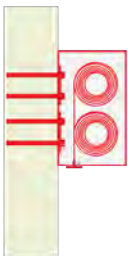
*Fixed directly to the lintel above an opening.*



**Soffit Fixed Mount**

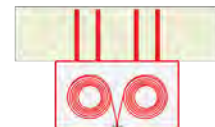
*Fixed directly to the underside of the soffit slab.*

## MULTIPLE ROLLER MOUNTING OPTIONS



**Over/Under Arrangement**

*Fixed directly to the lintel above an opening.*



**Side by Side Arrangement**

*Fixed directly to the underside of the soffit slab.*

# MODEL DSI-HHS10B

## UL 10B Hose Stream Rated Horizontal Smoke & Fire Curtain

The DSI Hose Stream Rated Horizontal Fire Curtain Model DSI-HHS10B allows architects to compartmentalize large floor openings and reduce or eliminate mechanical smoke evacuation systems. A solution to design challenges of preventing smoke and fire from spreading through the ceiling and atrium voids, stairwells, and skylights.

The DSI Hose Stream Rated Horizontal Fire Curtain consists of a light gauge compact steel headbox that houses the roller, fabric, and motor within the casing to create a small package that remains virtually invisible until deployed. The curtain consists of a light weight proprietary multi layered fire rated fiberglass/stainless steel fabric and slim steel side guides.

The DSI-HHS10B Horizontal Fire Curtain incorporates the cutting edge technology of our UL 10D curtain products but with the advantage of being tested and labeled to 2 hours UL 10B with Hose Stream.

## ADVANTAGES:

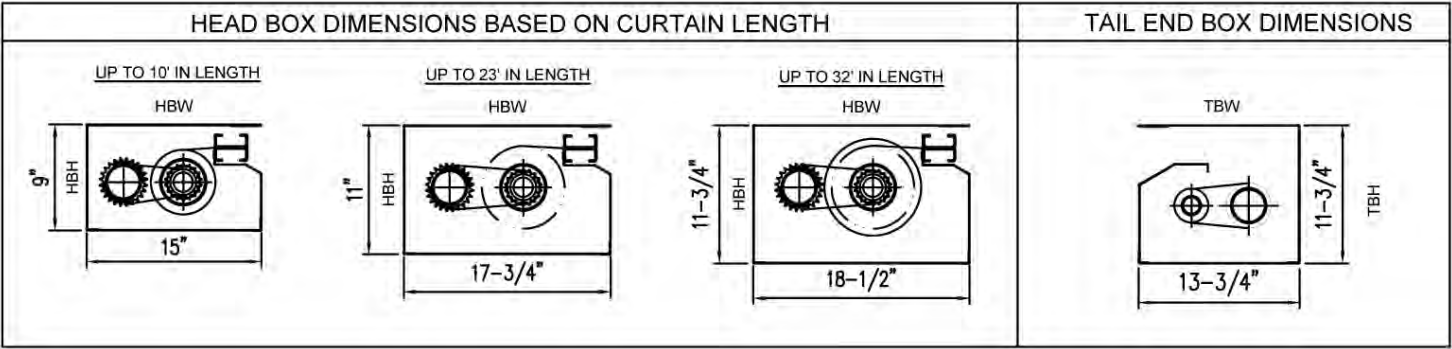
- UL 10B 120 minutes with Hose Stream
- Lightweight – 75% lighter than steel fire doors, requires little to no structural support
- Compact design
- Creates open space for your building design
- Saves money by reducing or eliminating smoke evacuation systems
- Battery backup system (optional)
- Automatic reset
- Multiple mounting options
- Widths up to 26 feet
- Single-part lengths up to 32 feet long
- Bi-parting option for larger openings

### Compliant with...

Code	Description
UL 10B	With Hose Stream Test – 120 minutes
ASTM E84	Class A Surface Building Characteristics of Building Materials
UL 864	Control Units for Fire Protective Signaling Systems
UL 1784	Air Leakage Test of Door Assemblies
ASTM E2226	Hose Stream Test
	OSHPD / HACAI Approved

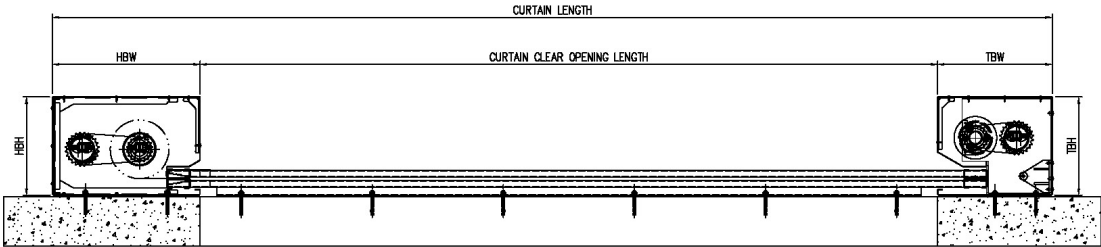


Scan for  
more info

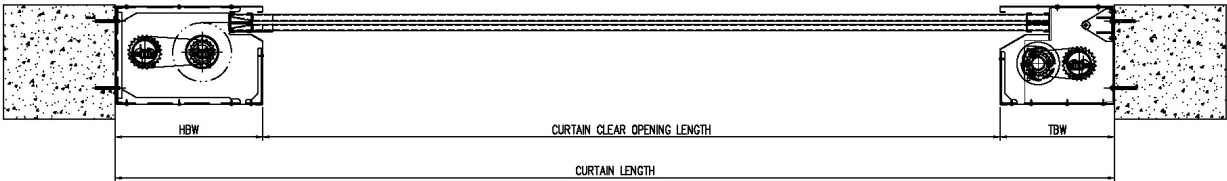


OPENING SIZE		HEADBOX		TAIL END BOX	
Curtain Length	Curtain Width	Headbox Width (HBW)	Headbox Height (HBH)	Tail End Box Width (TBW)	Tail End Box Height (TBH)
3' 4" to 10' 0"	up to 26' 0"	15"	9"	13-3/4"	11-3/4"
10' 0" to 23' 0"	up to 26' 0"	17-3/4"	11"	13-3/4"	11-3/4"
23' 0" to 32' 0"	up to 26' 0"	18-1/4"	11-3/4"	13-3/4"	11-3/4"

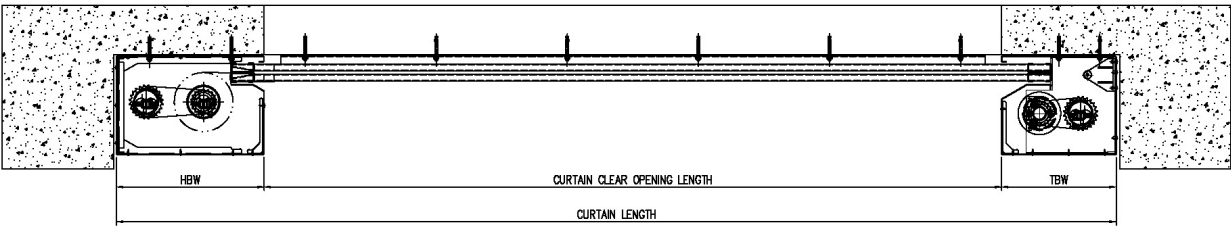
FLOOR MOUNT



JAMB MOUNT



UNDER CEILING MOUNT







# MODEL DSI-FW119

ASTM E119 / UL 263 Deployable Fabric Fire Wall

The DSI deployable fabric firewall model DSI-FW119 enables architects to exceed the maximum 25% fire barrier opening penetration restriction (IBC Section 707.6). Typical overhead or side-acting opening protectives with a fire resistance rating fall under this limitation. However, with an ASTM E119/UL 263 rating, the DSI deployable fabric fire wall is considered a wall and therefore meets the exception (Exception 3) and is not limited by this rule.

The DSI Moveable Fabric Fire Wall consists of two insulated DSI Hose Stream Rated Smoke and Fire Curtains mounted back-to-back to create a small, lightweight package above the ceiling that remains virtually invisible until deployed. The curtains consist of proprietary multi-layered, insulated fire-rated fiberglass/stainless steel fabric and slim steel side guides that can be hidden in the walls.

The DSI Deployable Fire Wall incorporates the cutting-edge technology of our Hose Stream Rated Smoke and Fire Curtain, but with the advantage of being tested as a 2-hour fire-rated wall assembly. This, in turn, allows architects more cost-effective options to open space design while still meeting code requirements.

## ADVANTAGES:

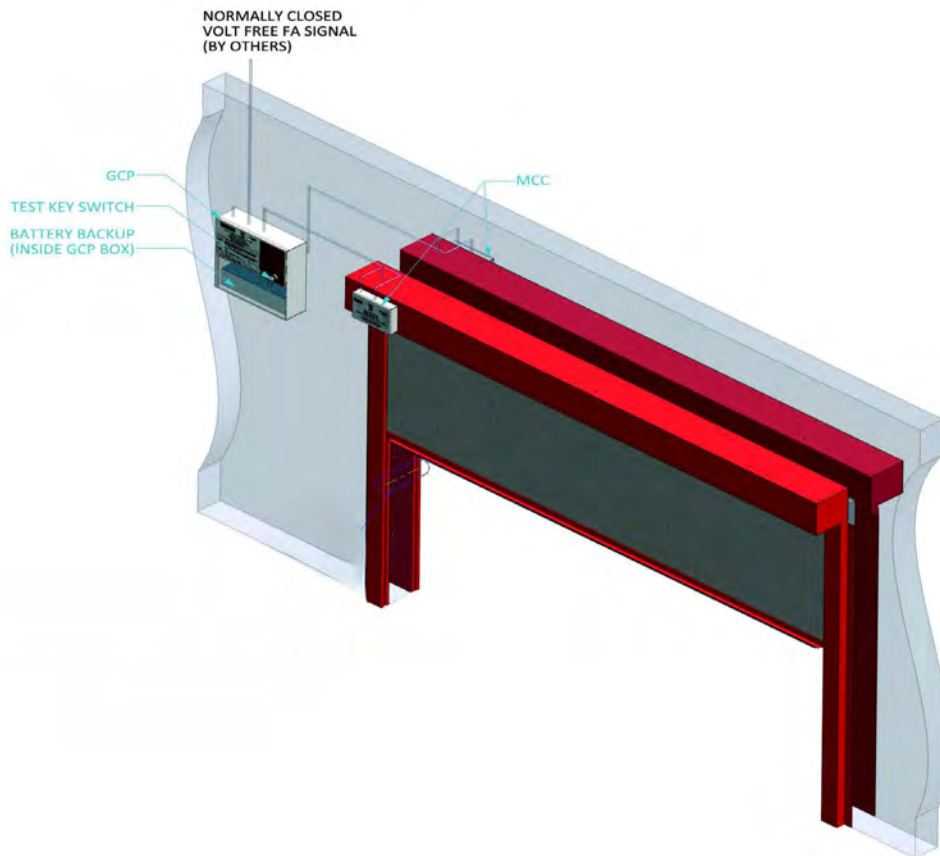
- Creates open space for your building design
- Allows designers to go beyond the 25% fire barrier penetration restriction
- Compact design
- Code compliant – Tested to ASTM E119 / UL 263
- 250-degree temperature rise rating up to 2 hours
- Battery backup system (optional)
- Fail-safe deployment with automatic reset
- Push to open button (optional)

## Compliant with...

Code	Description
ASTM E119 / UL 263	For a 2-Hour Fire Wall 250° Temperature Rise Rating up to 2-Hour
ASTM E2226 / UL 10B	Standard Practice for Application of Hose Stream
	OSHDP / HACAI Approved

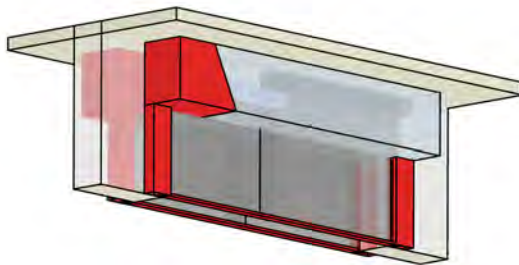


Scan for  
more info

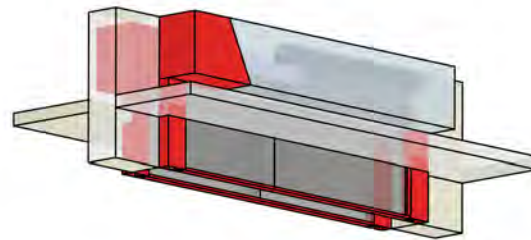


## CONFIGURATIONS

### HEADBOX FINISHING OPTIONS

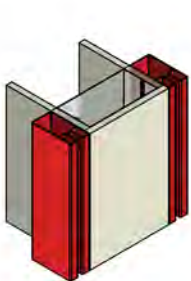


Exposed Mount

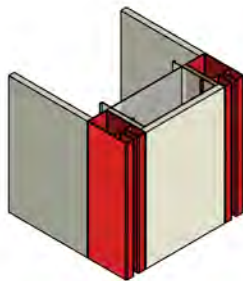


Shadow Gap

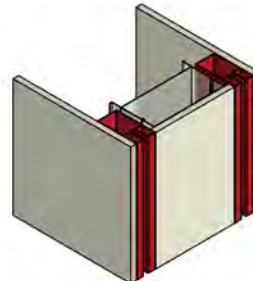
### SIDE GUIDE MOUNTING OPTIONS



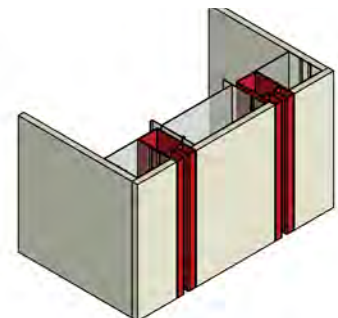
Exposed Flush



Butt to Wall Flush



Inset in Drywall



Inset in Wall Flush

## MODEL DSI-HSM10B

### *UL 10B Manual Hose Stream Rated Smoke and Fire Curtain*

With a UL 10B fire rating up to 180 minutes, the DSI-HSM10B fire curtain can be used in firewalls and fire barrier walls as a replacement solution to traditional overhead coiling steel fire shutters.

The DSI-HSM10B manual hose stream rated smoke and fire curtain is an opening protective for windows and other vulnerable openings that benefit from automatic-closing fire curtains deployed by a fusible link.

The assembly is comprised of a proprietary multi-layered fire-rated fiberglass/stainless steel fabric wound around a roller. The roller is encased in a compact headbox with side guides that can be concealed in the wall, making the system virtually invisible until activated.

## ADVANTAGES:

- No power needed, Fusible Link Activated
- Cost effective
- 75% lighter than coiling steel fire shutters
- Compact Headbox: as little as 9"
- Minimal side room required: 2" for any size
- Gravity Failsafe System & Easy Reset
- No exposed mechanisms, gears, chains, or motor parts
- Tested and Labeled to:  
UL 10B 90 or 180 minutes with hose stream
- UL 1784 "S" label
- ASTM E84

### Compliant with...

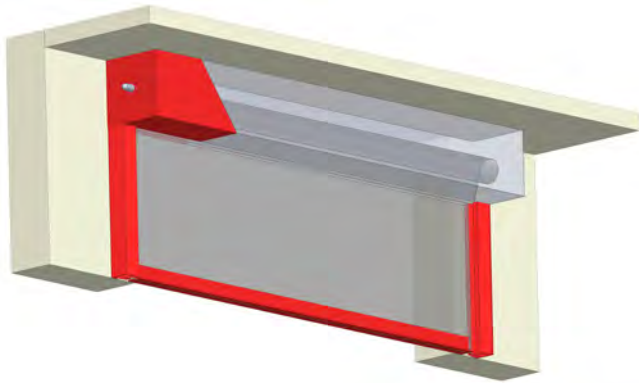
Code	Description
UL 10B	With Hose Stream Test – 90 or 180 minutes
UL 1784	Air Leakage Test of Door Assemblies
ASTM E84	Test Method for Surface Burning Characteristics



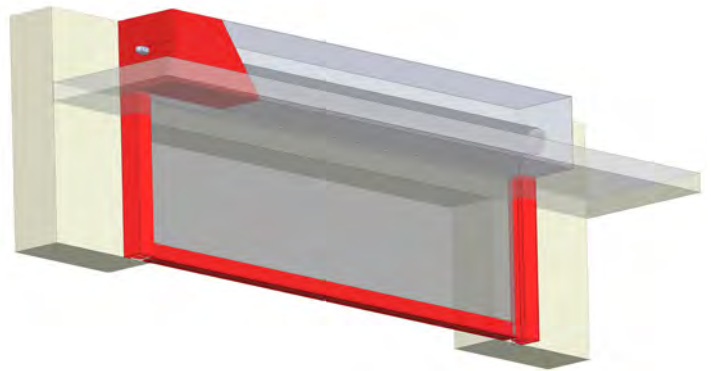
**Scan for  
more info**



## HEADBOX FINISHING OPTIONS



Exposed Mount

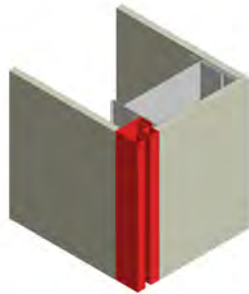


Shadow Gap

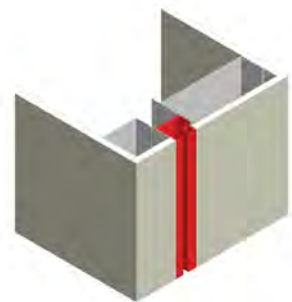
## SIDE GUIDE MOUNTING OPTIONS



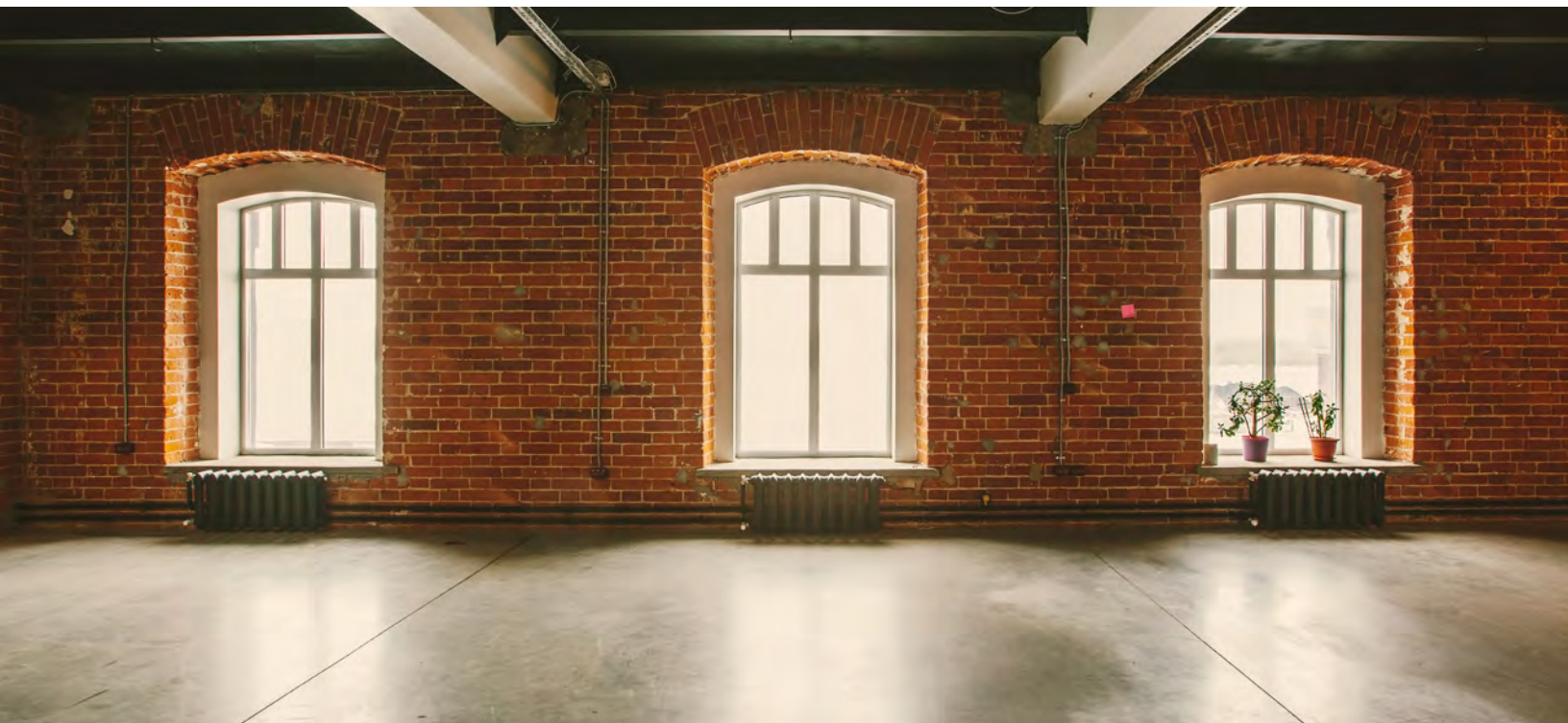
Exposed Flush



Butt to Wall Flush



Inset in Wall Flush





## PASS-THROUGH SLOT EGRESS DOOR

### *Smoke and Fire Curtain*

DSI Smoke and Fire Egress Curtains assist the management of cross-corridor separation and mass egress to their specific requirements. The DSI Pass-Through Slot Door option facilitates emergency escape, even in the event of power failure situations.

DSI egress curtain applications are used in the elevator shafts, elevator lobbies, cross corridors, staircases, and emergency exits.

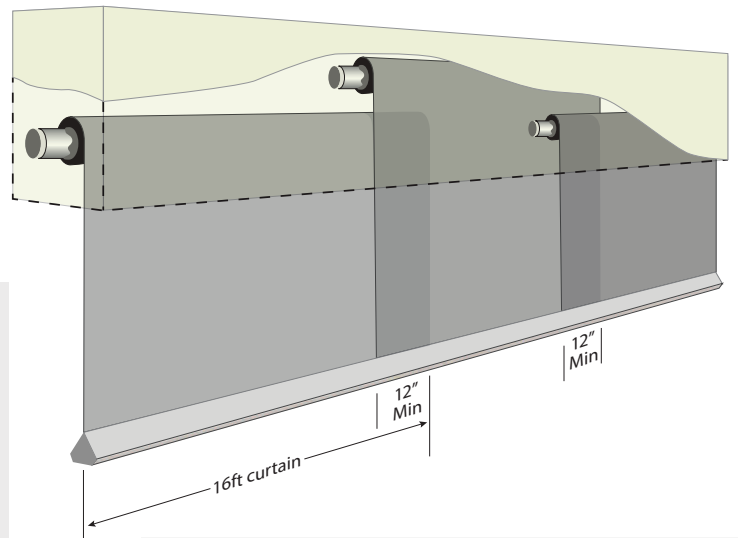


### Compliant with...

Code	Description
NFPA 101	Life Safety Code
NFPA 105	Standard for the installation, upkeep, and examination of smoke curtain assemblies
UL 10D	Fire Protective Curtain Assemblies
UL 10B	Time Temperature Curve
ASTM- E84	Test Method for Surface Burning Characteristics of Building Material
BS 5234-2:1992	(Method of Test as set out within BS 8524-1 :2013) Double Severe Duty Impact Test
ICC-ESR #4761	Approved egress option for elevator smoke curtains

### ADVANTAGES:

- Fabric tested to BS 476 Pt 6 & Pt 7. Class 0
- Custom sizes available to fit any opening
- Multiple egress options
- Less than 15 pounds of opening force required to open



### MULTIPLE BARREL ARRANGEMENT

- Allows the curtain to be built to virtually unlimited widths
- With proper signage creates the "Pass-Through Slot Egress Door"
- Available for both UL10D and UL10B curtains

# OTHER EGRESS OPTIONS



## Push to Exit Buttons

- Powered by internal battery or emergency back-up power
- Protected by rated raceway
- Available for both UL 10D and UL 10B curtains



## Delayed or 2-stage Descent

- Duration of delay (30 seconds up to 20 minutes)
- Height of delay adjustable
- Held in place by brake motor
- Available for both UL 10D and UL 10B curtains



## Manual Grab Strap Egress

- Less than 15 pounds of opening force required to open
- Limited to smaller sizes
- Available for UL 10D curtains only

## Manual Break Away Egress

- Instant break away release
- Minimal push force of less than 15 pounds
- Unobstructed emergency egress
- Swinging egress door that's self-sealing
- Available for UL10D curtains only





# DSI CONTROL OPTIONS

The Group Control Panel (GCP) provides power to the Motor Control Circuit (MCC) units when the fire alarm status is normal (closed). If the fire alarm is activated, the MCC units are powered down, allowing the curtains to deploy via gravity to their operational fire position. When the alarm is reinstated, the MCC's are powered up retracting the curtains. If there is a main power failure, the back-up batteries provide power to the MCC's for up to 4-hours (subject to load) and prevent deployment until discharged, unless overridden by an alarm signal. Delayed descent and delayed reset functions are fitted as standard.

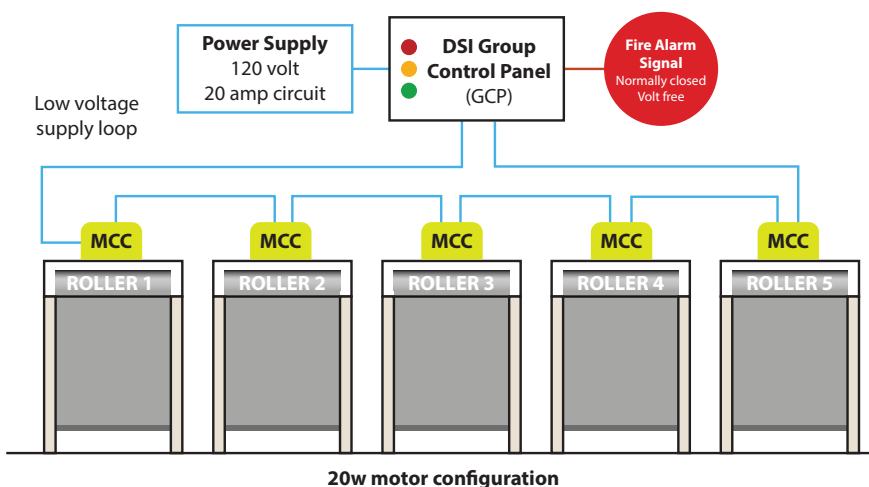
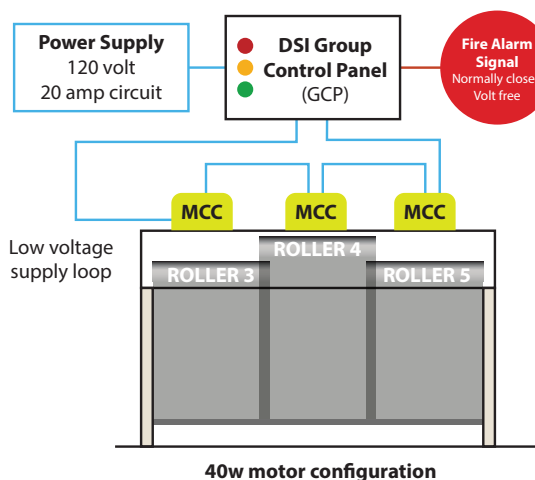


## FEATURES

- **Integral Battery Backup:** Up to 4-hour power supplied by two 7Ah rechargeable, sealed, lead acid cells
- **Testing:** Key switch control on panel
- **Status Indication:** LED series on panel:  
Green=main power healthy, Red=fire status,  
Bottom Green=battery failure
- **Compatibility:** The GCP runs up to 5 MCC units (5 - 20w motors) or 3 MCC units (3 - 40w motors) from the 24v ring output. Delayed decent is fitted as standard and is adjustable to suit project requirements
- **Egress** push buttons may require emergency power
- **Options:** Optional modules for two-stage descent, and BMS relays are available as an upgrade

### Group Control Panel Specifications

Type	Description
<b>Dimensions</b>	15-1/2" H x 13-1/2" W x 4" D
<b>Finish</b>	White powder coated mild steel
<b>Power supply</b>	120-130v 60Hz AC
<b>Fire signal</b>	Open on fire, normally closed volt free contacts

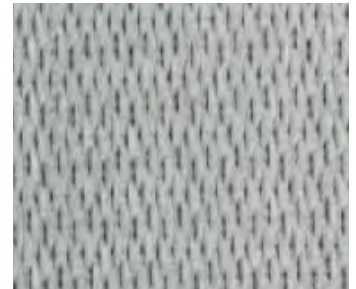


## DSI VG455 FABRIC

### *UL10D Fire Curtain 1-hour Option*

VG455 is a specially formulated, medium-weight fiberglass fabric coated with aluminum-pigmented polyurethane on both sides, creating a reflective heat shield that enhances durability and flexibility. It is tested to ASTM E84 and UL 723.

The DSI Smoke and Fire Curtain, utilizing VG455 fabric, is tested to UL 10D at 1800°F, achieving a 60-minute fire rating.



## DSI VWG690 FABRIC

### *UL10D Fire Curtain 3-hour Option*

VWG690 is a specially formulated, heavyweight fiberglass fabric reinforced with stainless steel wire and coated with fire-retardant, aluminum-pigmented polyurethane on both sides of the fabric. It is tested to ASTM E84 and UL 723.

The finished curtain fabric is carefully sewn with stainless steel thread to achieve factory-produced hems at the top and the sides. Additionally, when tested to UL 10D at 1800°F, the material achieved a 180-minute fire rating.



## DSI HS690-SS FABRIC- UL 10B

### *UL10B / Hose Stream Fire Curtain 3-hour Option*

HS690-SS is a stainless-steel wire reinforced glass fabric with a specially formulated aluminum pigmented fire-retardant silicone elastomer coating on both sides. This achieves a high temperature resistance of up to 2012°F and maintains integrity, thanks to its UL 10B label, which includes a rating of up to 180 minutes, including the Hose Stream Test.

Using a combination of woven fiberglass, stainless steel wire reinforcement, and silicone coating, the HS690-SS fabric is the ideal choice for openings that require resistance to higher temperatures.

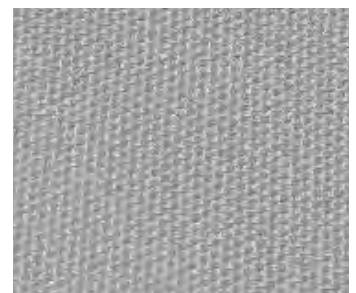


## DSI INSULATED FABRIC PANEL- ASTM E119

### *ASTM E119 / UL263 Fire Wall 2-hour option*

The DSI Insulated Fabric Panel is a specially designed material engineered to provide fire integrity and insulation, serving as an effective barrier against the propagation of fire and heat. It features a unique combination of a ceramic blanket sandwiched between two layers of fiberglass fabric.

This combination of materials ensures that the DSI Insulated Fabric Panel effectively meets ASTM E119 / UL 263 testing standards and achieves a 250-degree temperature rise rating of up to 2 hours.





## GUARANTEED QUALITY

Door Systems guarantee high quality products, tested to both UL and BS standards.

## This is why we do what we do...



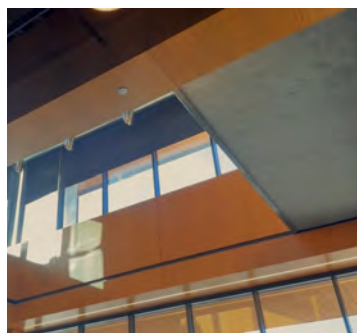
I've installed DSI 600 Elevator Smoke Curtains in one of my DTLA high-rises and plan to use them in others. Unlike other systems, these deploy smoothly, reset automatically, and work every time. Door Systems' team is attentive and reliable. I highly recommend them to any landlord or operations manager needing smoke and fire containment.

— Philip Hernandez, Operations Manager



I'm impressed with how well the DSI curtains work and how professional Door Systems is as a company. The fire test passed smoothly, and their team was responsive, easy to work with, and very accommodating. I'd recommend them to any contractor.

— David Therault, Site Superintendent



We recently had a Horizontal Smoke Curtain installed by Door Systems, and the experience was excellent from start to finish. Their professionalism, attention to detail, and quality of work were outstanding. I highly recommend them and look forward to working with them again.

— Darryl Bradley, Building Operations



Door Systems installed a nearly 100-foot-wide smoke and fire curtain in our GM Financial cafeteria project—easily the largest I've seen. The curtain works perfectly, and the project ran smoothly. They were professional, reliable, and a pleasure to work with. I highly recommend them.

— Ed Brock, Project Superintendent



## Connect with us



(866) 534-DOOR (3667)  
doorsysinc.com  
contact@doorsysinc.com



Approved  
Continuing  
Education



PREFERRED  
EDUCATION  
PROVIDER