

MODEL DSI-D1HR

Automatic Smoke Curtain

DSI Automatic Smoke Curtains assist the management of smoke in a building, channeling the movement of smoke to smoke extraction points in the building or creating reservoirs to slow down the spreading of smoke. The curtains remain virtually invisible in their retracted position within the compact head-box.

When signaled by a local detector or fire alarm system, the curtain descends to the operational level using the Gravity Fail Safe system.

The DSI Automatic Smoke Curtain Model DSI-D1HRS single barrel configuration for widths under 16 feet and Model DSI-D1HRM multi barrel configurations for widths over 16 feet create a one-hour opening protective smoke and fire barrier.

The assembly comprises a fire-rated fiberglass fabric wrapped around a roller which encases a compact head box that is typically installed above the ceiling. This makes the system virtually invisible until activated.

The DSI-D1HR Automatic Smoke Curtain is totally Gravity Fail Safe, resets automatically, and incorporates the latest in electronic technology. As a result, it is one of the most advanced, yet cost-effective systems on the market.

ADVANTAGES:

- Cost-effective
- Creates open space for your building design
- Compact design, low headroom requirements
- Virtually invisible design
- Lightweight, requires little to no structural support
- Unlimited width, custom sizes
- Code compliant
- Battery backup system standard
- Fail-safe system with automatic reset
- Three-hour option available

System tested in accordance with...

Description

BS EN 12101-1 Annex B (Reliability, Response time & Material Durability)

BS EN 12101-1 Annex C (Air Leakage)

BS EN 12101-1 Annex D (Fire Resistance Test)

UL 10 D, UL 1784, UL 864

Fabric Tested to BS 476 Pt 6 & Pt 7, Class 0

System tested in single & Multiple Barrel Orientation

Tested to ASTM E84 & UL 723 for VG455 Fabric



GUARANTEED QUALITY

Door Systems guarantee high quality products, tested to both UL and BS standards.

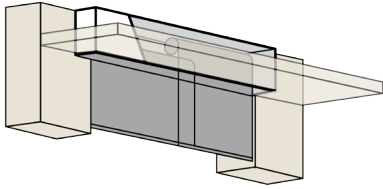


The **SMOKE & FIRE CONTAINMENT** People

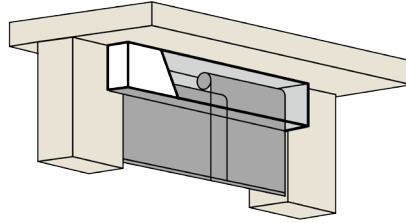
MODEL DSI-D1HR

Automatic Smoke Curtain

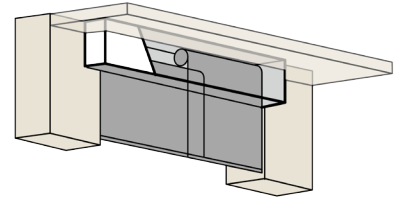
HEADBOX FINISHING OPTIONS



Flush to Ceiling (OPTION#1)

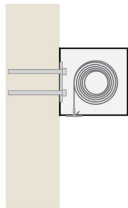


Exposed Mount (OPTION#2)



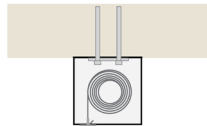
Shadow Gap (OPTION#3)

SINGLE ROLLER MOUNTING OPTIONS



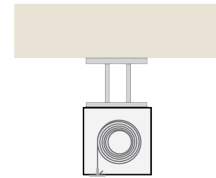
Fixed Mount (SRMFM)

Fixed directly to the lintel above an opening.



Soffit Fixed Mount (SRMSFM)

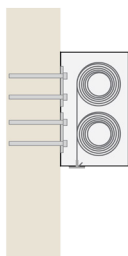
Fixed directly to the underside of the soffit slab.



Suspended Soffit Mount (SRMSSM)

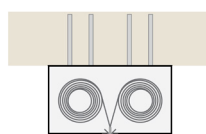
Suspend from soffit via unistruts and all thread.

MULTIPLE ROLLER MOUNTING OPTIONS



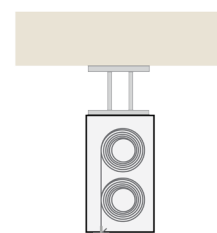
Over/Under Arrangement (MRMOU)

Fixed directly to the lintel above an opening.



Side by Side Arrangement (MRMSS)

Fixed directly to the underside of the soffit slab.



Suspended Over/Under Arrangement (MRMSOU)

Suspend from soffit via unistruts and all thread.