

MODEL DSI-FW119

Deployable Fabric Fire Wall

The DSI Deployable Fabric Fire Wall Model DSI-FW119 allows architects to go beyond the maximum 25% fire barrier opening penetration restriction (IBC Section 707.6). Typical overhead or side acting opening protectives with a fire resistance rating fall into this limitation. However, with an ASTM E119/ UL263 rating, the DSI Deployable Fabric Fire Wall is considered a wall and therefore meets the exception (Exception 3) and is not limited to this rule.

The DSI Deployable Fabric Fire Wall consists of two insulated DSI Hose Stream Rated Smoke and Fire Curtains mounted back-to-back to create a small light weight package above the ceiling that remains virtually invisible until deployed. The curtains consist of proprietary light weight multi layered insulated fire rated fiberglass/ stainless steel fabric and slim steel side guides that can be hidden in the walls.

The DSI Deployable Fire Wall incorporates the cutting-edge technology of our Hose Stream Rated Smoke and Fire Curtain but with the advantage of being tested as a 2-hour fire rated wall assembly. This in turn allows architects more cost-effective options to open space design while still meeting code requirements.



GUARANTEED QUALITY

Door Systems guarantee high quality products, tested to both UL and BS standards.

ADVANTAGES:

- Creates open space for your building design.
- Allows designers to go beyond the 25% fire barrier penetration restriction.
- Saves money by reducing or eliminating smoke evacuation systems.
- Compact design
- Code compliant – Tested to ASTM E119/ UL 263
- 250-degree Temperature rise rating up to 2 hours
- Battery backup system (optional)
- Fail-safe deployment with automatic reset
- Push to open button (optional)

Compliant with...

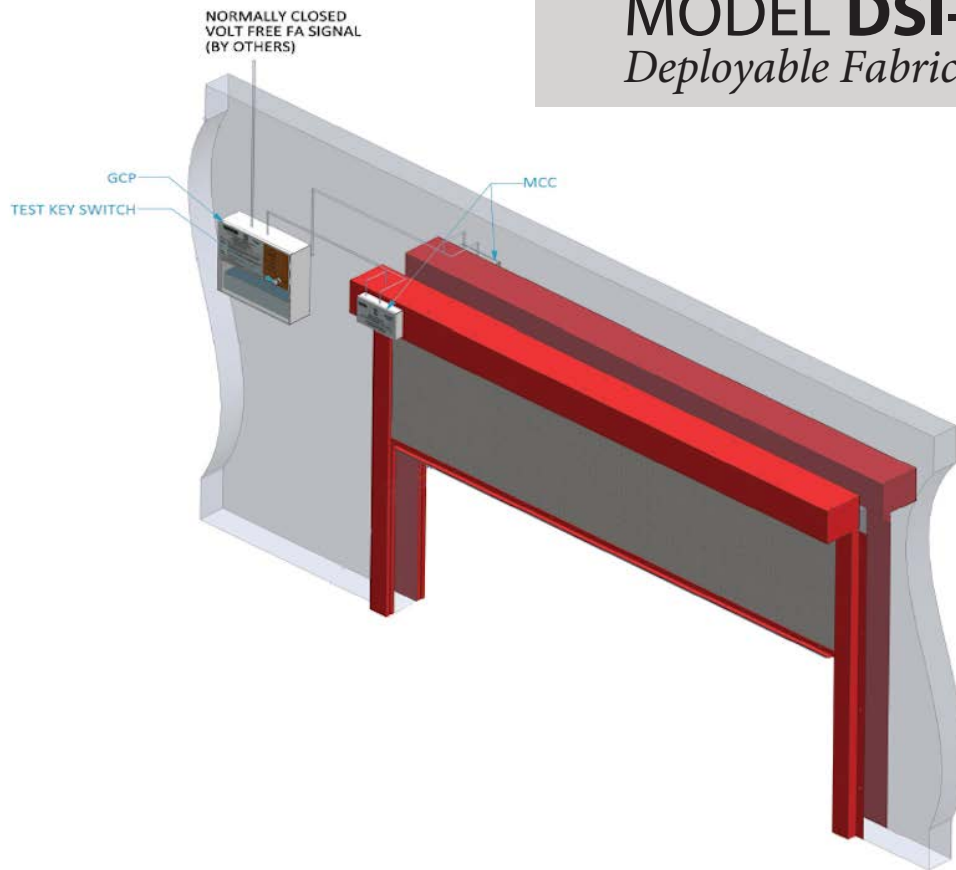
Listing	Description
ASTM E119/UL 263	8adS2Ž agd8dM S^ 250° Temperature Rise Rating up to 2-Hour
ASTM E2226/UL 10B	Standard Practice for Application of Hose Stream



The **SMOKE & FIRE CONTAINMENT** People

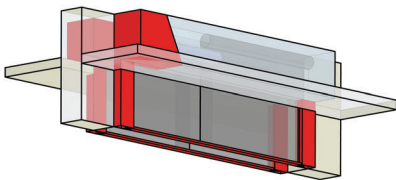
MODEL DSI-FW119

Deployable Fabric Fire Wall

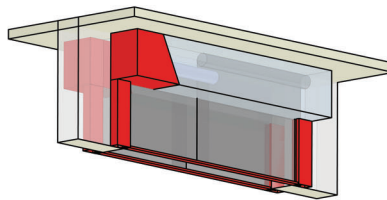


Configurations

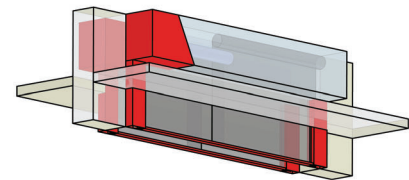
HEADBOX FINISHING OPTIONS



Flush to Ceiling(HBFC_01)

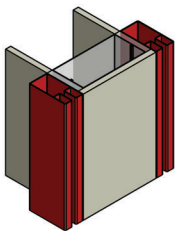


Exposed Mount(HBEM_01)

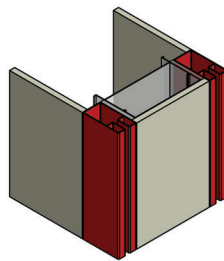


Shadow Gap(HBSG_01)

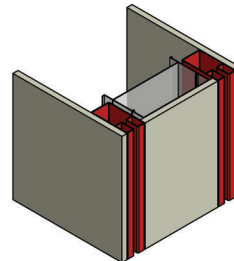
SIDE GUIDE MOUNTING OPTIONS



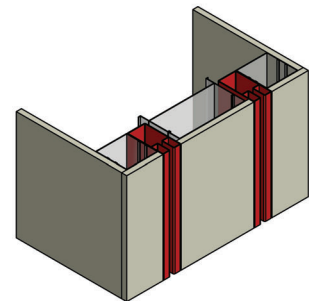
Exposed Flush(SGMEF_01)



Butt to Wall Flush(SGMBWF_02)



Insert in Drywall(SGMIDF_03)



Insert in Wall Flush(SGMIWF_3A)

