

MODEL DSI-M10D

Manual Fire Protective Smoke Curtain

With a UL 10D rating up to 180-minutes, the DSI-M10D Manual Smoke Curtain is an opening protective for windows and other vulnerable openings that benefit from automatic-closing fire curtains deployed by a fusible link.

The assembly is comprised of a proprietary fire-rated fiberglass/stainless steel fabric wound around a roller.

The roller is encased in a compact head box typically installed above the ceiling with side guides that can be concealed in the wall, making the system virtually invisible until activated.

Compliant with...

Code	Description
UL 10D	Fire Protective Smoke Curtains – 60 or 180 Minutes
UL 1784	Air Leakage Test of Door Assemblies
UL 10C	Without Hose Stream Test – 20 Minutes
UL 10B	Without Hose Stream Test – 20 Minutes
ASTM E84	Test Method for Surface Burning Characteristics

ADVANTAGES vs STEEL FIRE SHUTTERS

- No power needed, Fusible Link Activated
- Cost effective
- 75% lighter than overhead steel fire shutters
- Compact Headbox: as little as 7"
- Minimal side room required: 2" for any size
- Gravity Failsafe System & Easy Reset
- No exposed mechanisms, gears, chains, or motor parts
- Tested and Labeled to: UL 10D 60 or 180 minutes without hose stream test
- UL 1784 "S" label
- ASTM E84



GUARANTEED QUALITY

Door Systems guarantee high quality products, tested to both UL and BS standards.

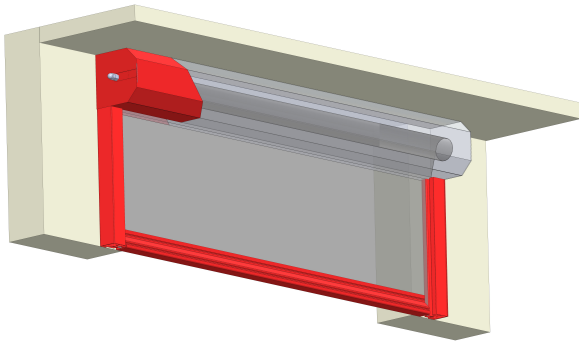


The **SMOKE & FIRE CONTAINMENT** People

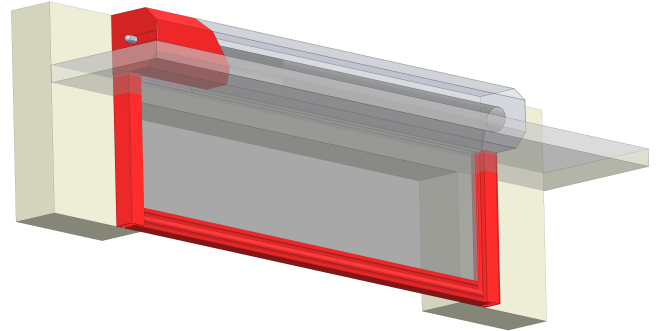
MODEL DSI-M10D

Manual Fire Protective Smoke Curtain

HEADBOX FINISHING OPTIONS

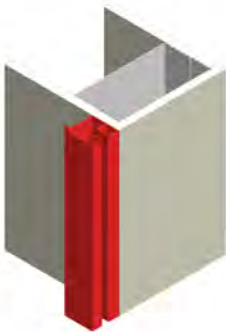


Exposed Mount

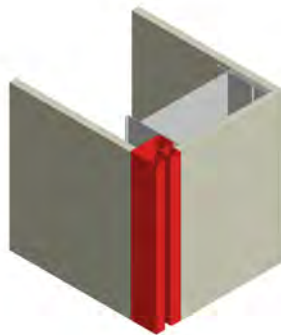


Shadow Gap

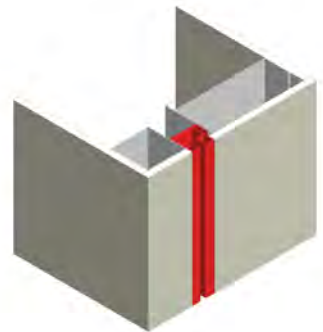
SIDE GUIDE MOUNTING OPTIONS



Exposed Flush



Butt to Wall Flush



Inset in Wall Flush



(866) 534-DOOR (3667) | doorsysinc.com | contact@doorsysinc.com