

## MODEL DSI-C1HR

### *Smoke and Fire Curtain*

The DSI Smoke and Fire Curtain Model DSI-C1HRSS single barrel configuration for widths under 16 feet and Model DSI-C1HRSM multi barrel configurations for widths over 16 feet create a one hour opening protective smoke and fire barrier.

The assembly comprises a fire-rated fiberglass fabric wrapped around a roller which encases a compact head box that is typically installed above the ceiling with side guides that are buried in the wall. This makes the system virtually invisible until activated.

The DSI-C1HR Smoke and Fire Curtain is totally Gravity Fail Safe, resets automatically, and incorporates the latest in electronic technology. As a result, DSI-C1HR Curtain is one of the most advanced, yet cost effective systems on the market.

### Compliant with...

Code	Description
UL 10 D	C1HR: Fire protective Smoke Curtains – 60 minutes
UL 1784	Air leakage test of door assemblies
UL 10 C	Without Hose Stream Test – 20 minutes
UL 10 B	Without Hose Stream – 20 minutes
UL 864	Control Units for Fire Protective Signaling Systems
	California State Fire Marshall Listed
	OSHPD Approved
	LAFFD Approval for High Rise Applications

## ADVANTAGES:

- Cost-effective
- Creates open space for your building design
- Compact design , low headroom requirements
- Virtually invisible design
- Lightweight, requires little to no structural support
- Unlimited width, custom sizes
- Code compliant
- Multiple egress options
- Battery backup system standard
- Fail safe system with automatic reset



### GUARANTEED QUALITY

Door Systems guarantee high quality products, tested to both UL and BS standards.

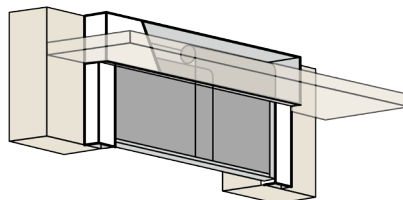


The **SMOKE & FIRE CONTAINMENT** People

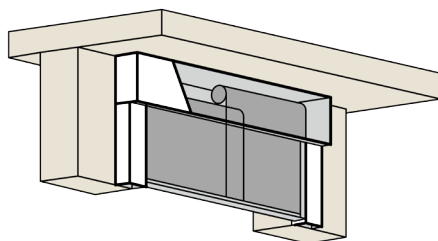
# MODEL DSI-C1HR

## Smoke and Fire Curtain

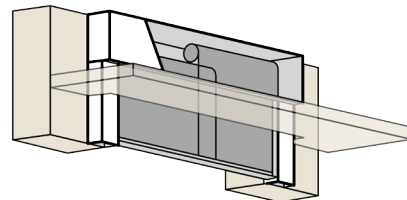
### HEADBOX FINISHING OPTIONS



**Flush to Ceiling (OPTION#1)**

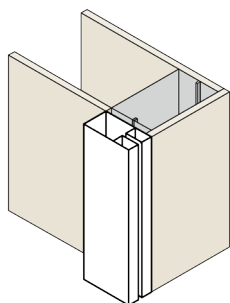


**Exposed Mount (OPTION#2)**

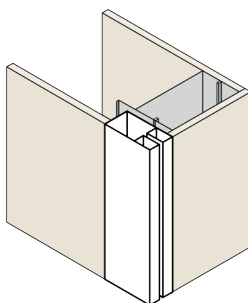


**Shadow Gap (OPTION#3)**

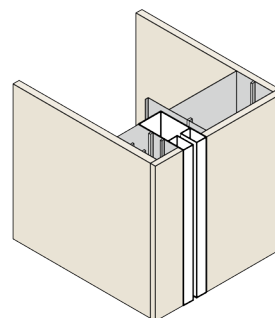
### SIDE GUIDE MOUNTING OPTIONS



**Exposed Flush (SGMEF)**

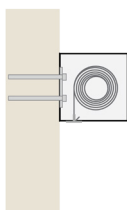


**Butt to Wall Flush (SGMBWF)**



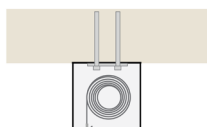
**Inset in Wall Flush (SGMIWF)**

### SINGLE ROLLER MOUNTING OPTIONS



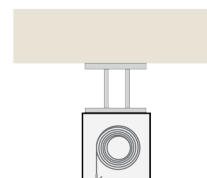
**Fixed Mount (SRMFM)**

*Fixed directly to the lintel above an opening.*



**Soffit Fixed Mount (SRMSFM)**

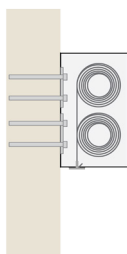
*Fixed directly to the underside of the soffit slab.*



**Suspended Soffit Mount (SRMSSM)**

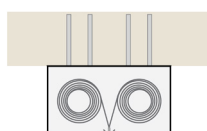
*Suspend from soffit via unistruts and all thread.*

### MULTIPLE ROLLER MOUNTING OPTIONS



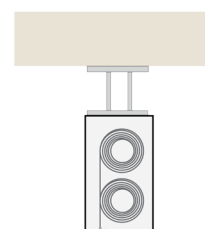
**Over/Under Arrangement (MRMOU)**

*Fixed directly to the lintel above an opening.*



**Side by Side Arrangement (MRMSS)**

*Fixed directly to the underside of the soffit slab.*



**Suspended Over/Under Arrangement (MRMSOU)**

*Suspend from soffit via unistruts and all thread.*



(866) 534-DOOR (3667) | [doorsysinc.com](http://doorsysinc.com) | [contact@doorsysinc.com](mailto:contact@doorsysinc.com)